

GENERAL SHELTER SPECIFICATIONS: QTY-__ SHELTER(S)

- A. GENERAL:

Unassembled modular shelter is fabricated from low maintenance, lightweight corrosive resistant aluminum (factory fabricated). Site assembly required.
- 1

DIMENSIONS:

5'-0" wide x 11'-6" long, 87 1/2" exterior height and 83" interior ceiling height.
- 2

FRAME:

Provide structural framing of 6063-T6 aluminum alloy extrusions. Members shall have a Quaker Bronz or Clear Anodized finish. Framing assembled using internally located mechanical fasteners. Exposed fasteners on framing system are not acceptable. Standard 7 3/4" ventilation space at bottom of unit. Two front openings.
- 3

ROOF/CEILING:

Roof shall be constructed using galvanized 20 gauge, G-60 interlocking pan sections. Sections are 3" high varying widths. Roof drains into full perimeter gutter system with drain holes. Interior ceiling shall be a panel system providing smooth flat interior, constructed from 20 gauge pre-finished white steel.
- 4

WINDOWS:

Fixed windows are single pane 1/4" clear tempered safety glass, glazed within wall system extrusions and not fastened to exterior wall. Glass sealed with concealed gasket system.
- 5

ANCHORING:

Shelter installation requires concrete pad to be 12" minimum larger than shelter in both length and width dimensions. Pad must be level within 1/2" over length and width of structure. Shelter to be anchored to pad using height adjustable aluminum boot and anchored down using 1/4" X 1 7/8" Hilti Kwik Hus-EZ screw anchors.
- 6

BENCH:

(Qty-1) Anodized aluminum bench system includes aluminum plank bench and aluminum plank backrest, end caps, brackets and hardware. Bench shall be shipped loose, and installed by others in the field. Bench size allows for shelter to be ADA-Compliant.
- INSTALLATION:

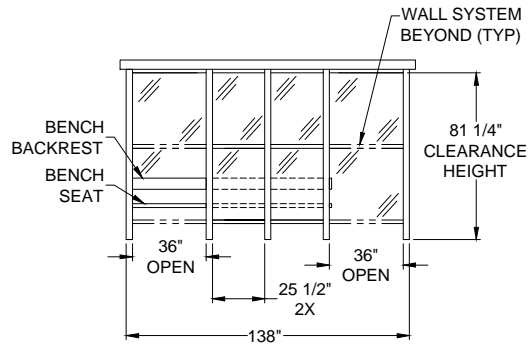
Unit is knocked down and crated, off loaded and installed by others.

DESIGN LOADS
WIND LOAD: 90 mph
SNOW LOAD: 20 psf

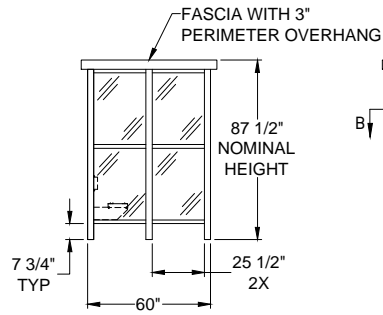
CERTIFICATION

TITLE:	5'-0" X 11'-6" ALUMINUM SHELTER
JOB NO:	
QUOTE NO:	
LOCATION:	
MOD NO:	
COLOR:	SEE SPECIFICATIONS
DATE:	
DRAWN BY:	JRG
SCALE:	N.T.S.
SHEET:	1 OF 2

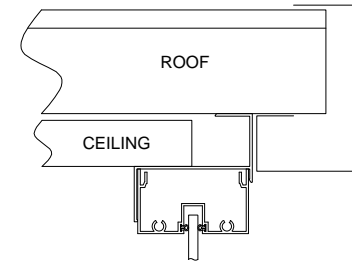
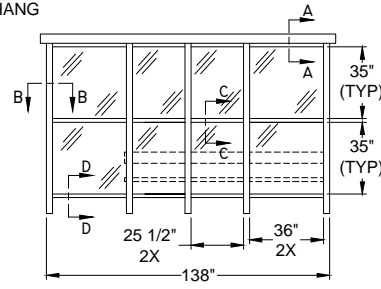
ELEVATION A



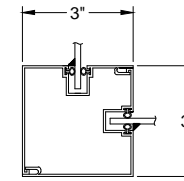
ELEVATION B



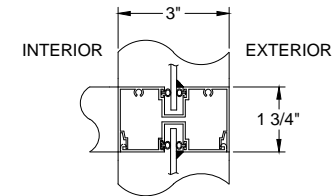
ELEVATION C



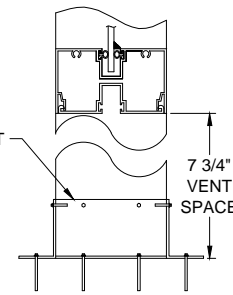
VIEW A-A



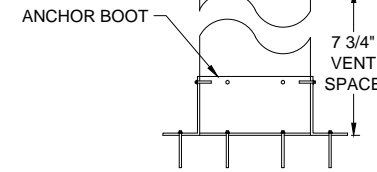
VIEW B-B



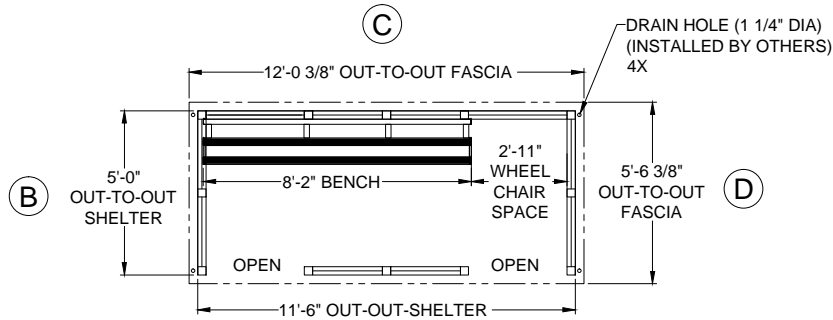
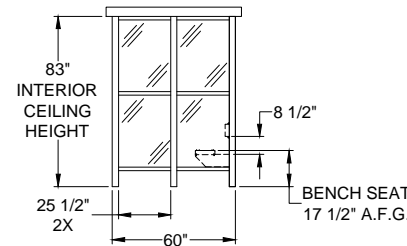
VIEW C-C



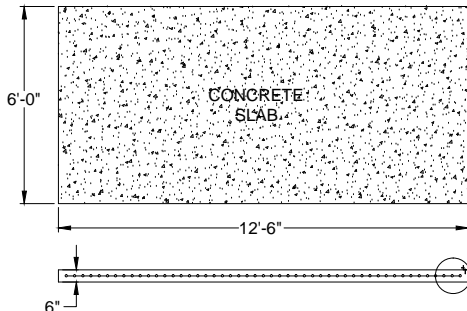
VIEW D-D



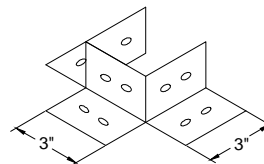
ELEVATION D



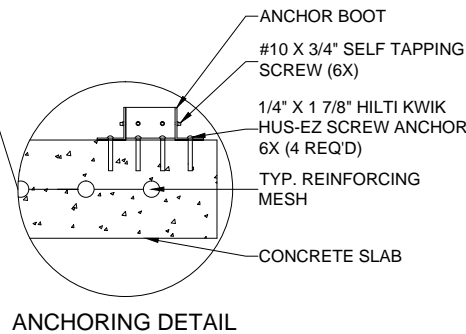
PLAN VIEW



NOTE: CONCRETE SLAB DESIGN BY OTHERS, DIMENSIONS SHOWN ARE RECOMMENDED MINIMUM SIZES ONLY.



ANCHOR BOOT



ANCHORING DETAIL

CERTIFICATION

TITLE:	5'-0" X 11'-6" ALUMINUM SHELTER
JOB NO:	
QUOTE NO:	
LOCATION:	
MOD NO:	
COLOR:	SEE SPECIFICATIONS
DATE:	
DRAWN BY:	JRG
SCALE:	N.T.S.
SHEET:	2 OF 2