

Accessible Fire Ring with Pin Anchors



Wheelchair Accessible Campfire Ring with swivel cooking grate.

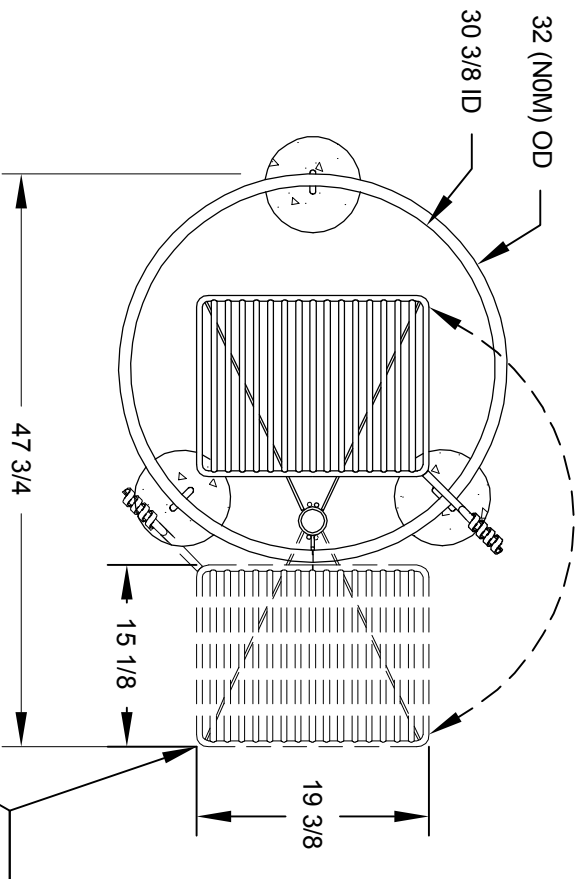
(Below) Grate shown rotated out of the firering.



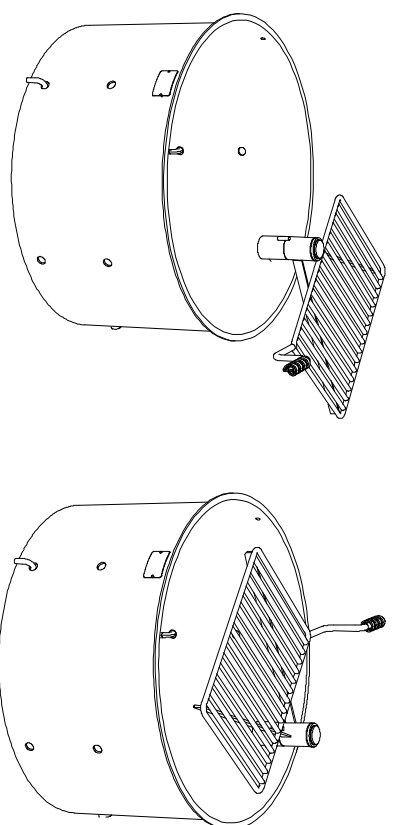
- **Meets ADA guidelines, requires less than five pounds of force with one hand to move grate out of fire ring**
- **Handle is never over the fire**
- **Choose from two fire barrier heights**
- **Flanged fire ring for strength and safety**
- **Public use-type spring grips of coiled steel bar**
- **Elevated cooking grate and firebed conform to ADA guidelines**
- **Required aggregate fill protects site surfaces such as paver blocks, cement, and asphalt from heat damage**
- **Quality construction throughout**

SPECIFICATIONS:

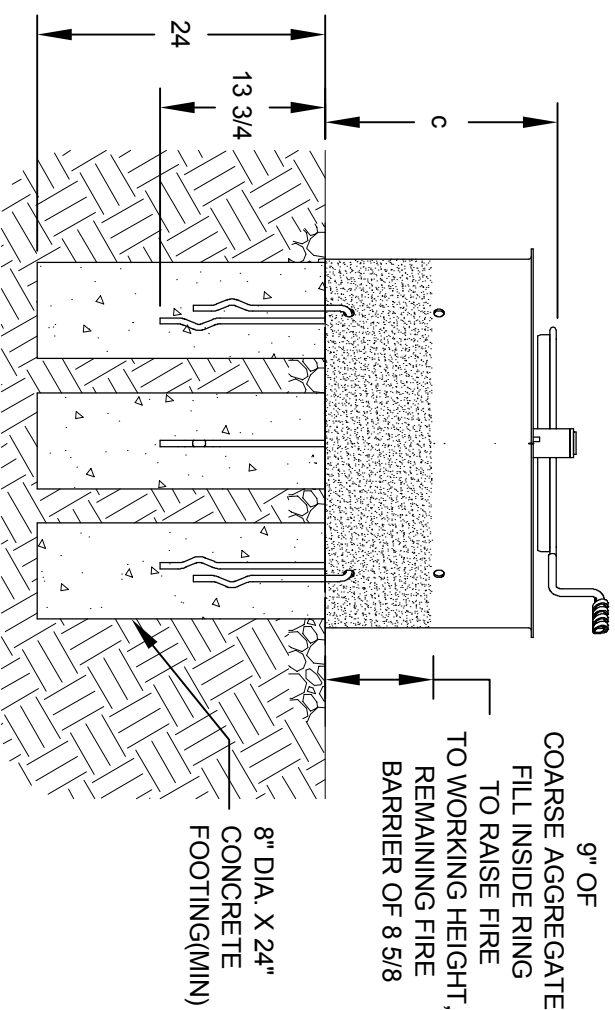
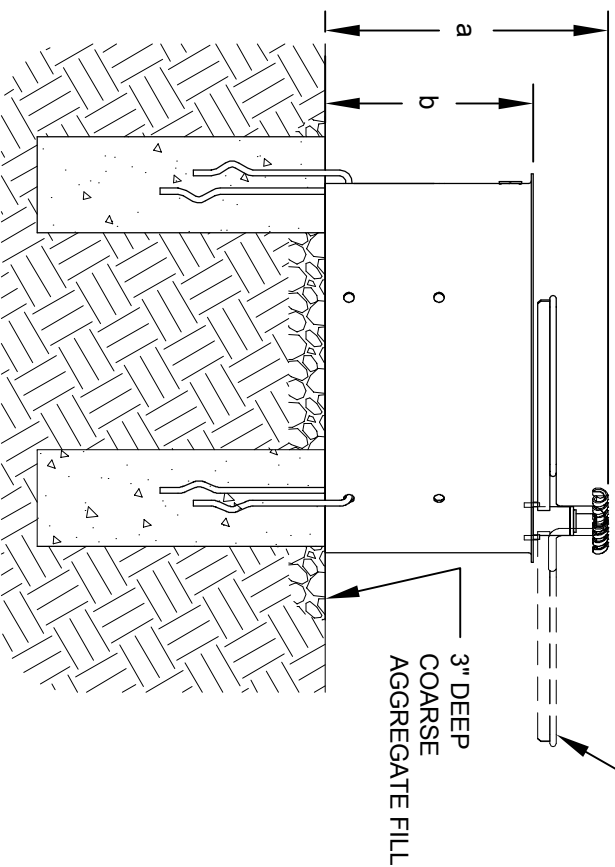
- Designed to meet ADA guidelines requiring less than five pounds of force with one hand to operate the grate.
- 32" overall dia. firering is constructed from 3/16" thick steel with a formed (NOT WELDED) 1" flanged lip around the top of the ring and ten 1" dia. drain/draft/anchor holes located around the perimeter.
- Side height is 23-3/8".
- The single level, 300 sq. in. cooking grate is constructed from 1/2" dia. A-36 steel bars around the perimeter, 5/8" dia. A-36 steel bar for the handle, and 1/2" dia. A-36 steel bar for the grate bars.
- Grate is provided with a substantially constructed spring grip suitable for public use made from 1/8" x 1/2" flat bar (not wire springs).
- Grate is mounted on a 2-3/8" OD tube allowing it to rotate on a horizontal plane out of the fire ring. Two welded-on stops limit rotation to 180° to prevent the handle entering the area over the fire.
- Fire ring is designed to be filled with customer supplied aggregate fill to a minimum of 9" above ground level to conform with ADA guidelines to raise fire to proper height. Fill also protects hard surfaces from heat damage.
- Unit is provided with three 1/2" dia. anchor pins for concrete embedment.
- Entire unit is finished in high temperature, heat resistant, nontoxic black enamel paint.



GRATE ROTATES
180 DEGREES
TO OUTSIDE FIRERING



DIMENSION			
a	b	c	
23 9/16	16 7/8	19 13/16	



ALL DIMENSIONS IN INCHES