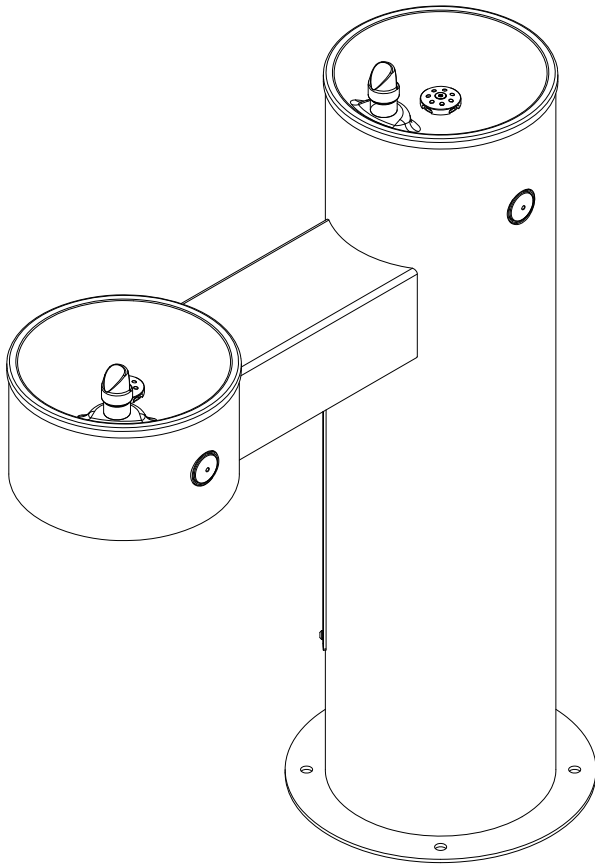


# Installation & Operation Manual

## Outdoor Drinking Fountains



**Dual Station**

### Table of Contents

Pre-Installation Information.....	3
Standard Fountain Configurations.....	4
Physical Dimensions .....	5
Rough-in Dimensions .....	7
Required Installation Supplies .....	9
Parts List and Exploded-view Drawings.....	10
Hardware Identification .....	13
Installation Instructions .....	
Step 1: Fixture Installation .....	14
Step 2: Adjusting Drinking Spout Flow.....	15
Care and Maintenance .....	16
Troubleshooting .....	17
Drawings.....	
Physical Dimensions .....	18
Rough-in Dimensions .....	20
Push Button Detail .....	22



(Page intentionally left blank)

Pre-Installation Information

Installation notice!

Check Rough-In location **PRIOR** to installation

Flush lines thoroughly **PRIOR** to hook-up

When installing the **Outdoor Drinking Fountain** system:

Before step 1 of the installation instructions, ensure that rough-ins are in the correct location.

The valve assembly, including the spray head, **MUST NOT BE** connected until *after* all lines have been flushed to remove the small particles of debris that are inherent with new construction projects and all chemicals that are used in flushing are purged from the system.

Chemicals used in flushing plumbing systems can attack the internal components of the valve and spray head and severely damage them, so any flushing of the system must be followed by a full flushing with pure water to clear any harsh chemicals remaining in the system. Debris in the system if allowed to enter the valve assembly and spray head can cause poor performance or outright failure.

Again **DO NOT** attempt to connect the valve assembly and spray head until *after* all flushing is complete and pure water is the only media that will be passing through the system. Damage to the valve assembly or spray head caused by harsh chemicals or debris will not be covered by the manufacturer's warranty.

Any fittings provided by the installer should be made of plastic to electrically isolate the unit from the building or connected plumbing system.

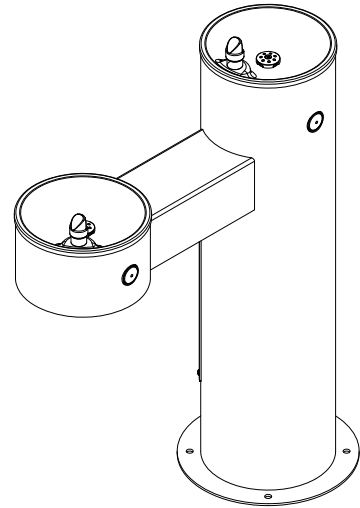
The grounding of electric equipment such as telephones, computers, etc, to water lines is a common procedure. This grounding can cause electrical feedback into a water fountain or similar fixture, causing electrolysis, which results in a metallic taste or an increase in the metal content of the water. This can easily be avoided by using the proper materials as indicated.

Installation notice!

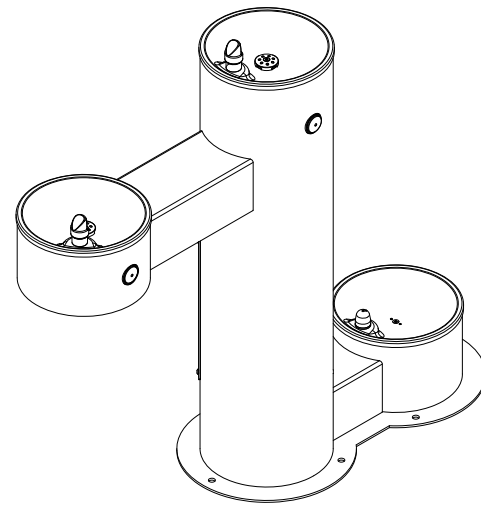
Check Rough-In location **PRIOR** to installation

Flush lines thoroughly **PRIOR** to hook-up

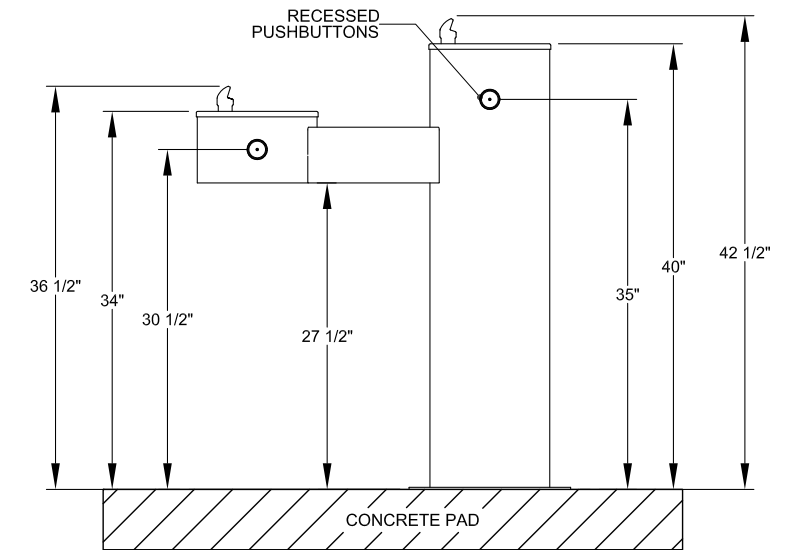
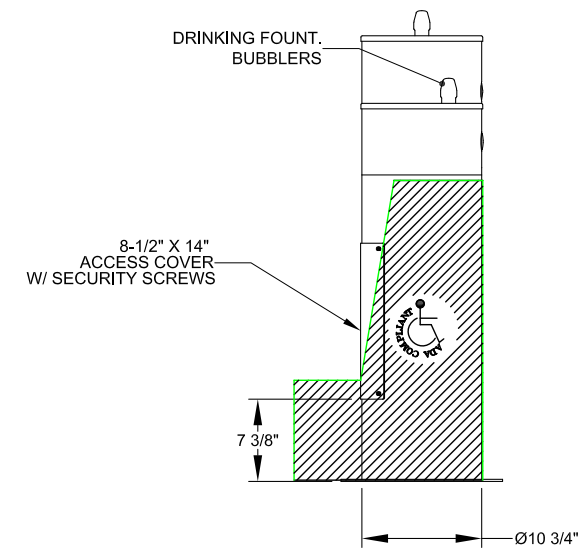
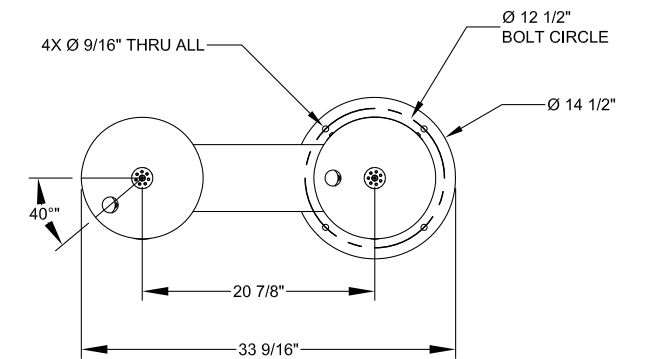
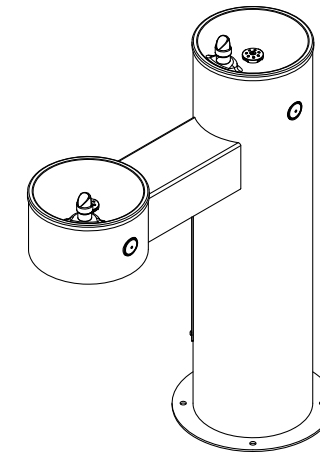
## Standard Fountain Configurations



### Dual Station ADA Drinking Fountain

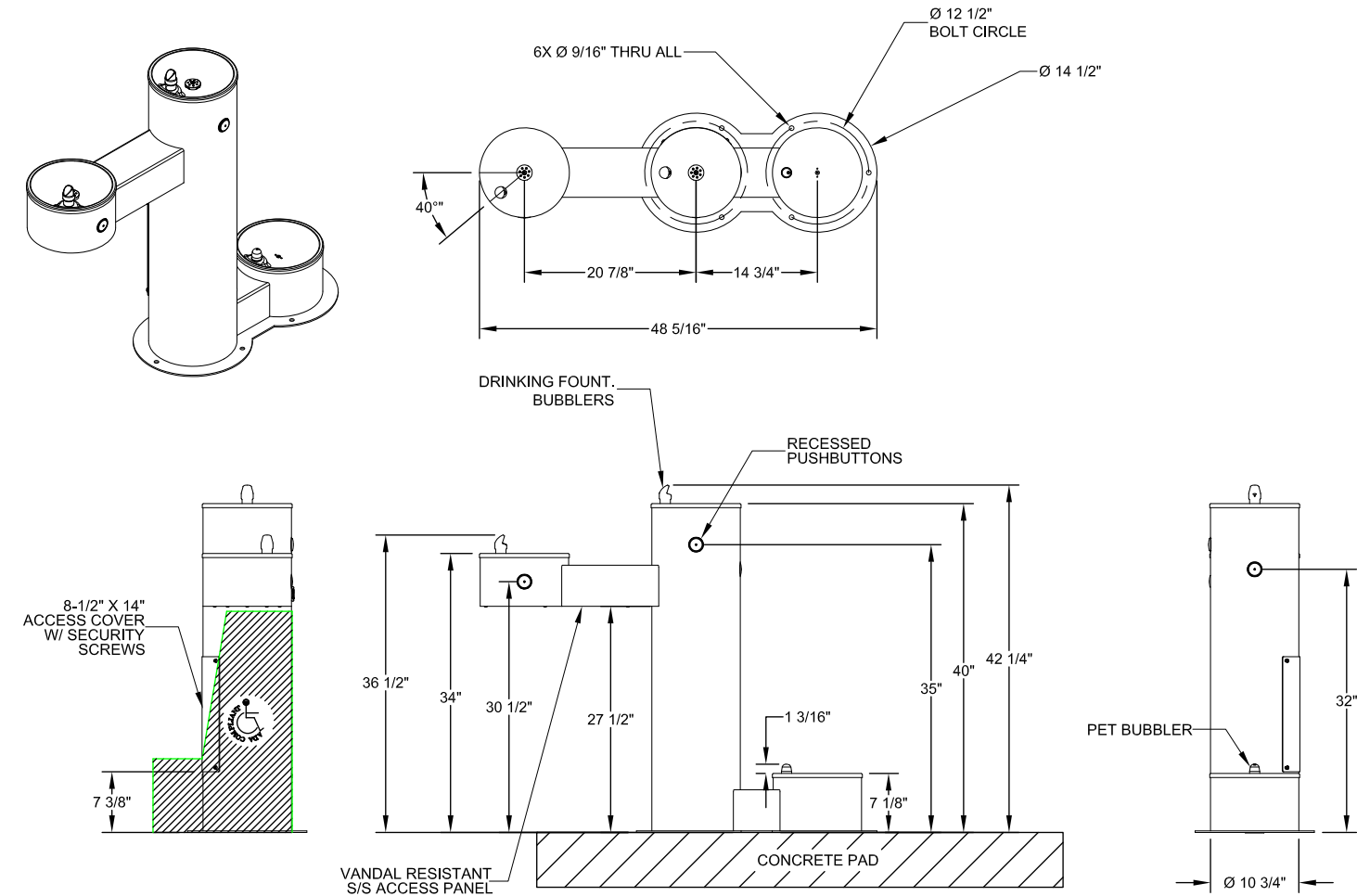


### Three Station ADA and Pet Drinking Fountain

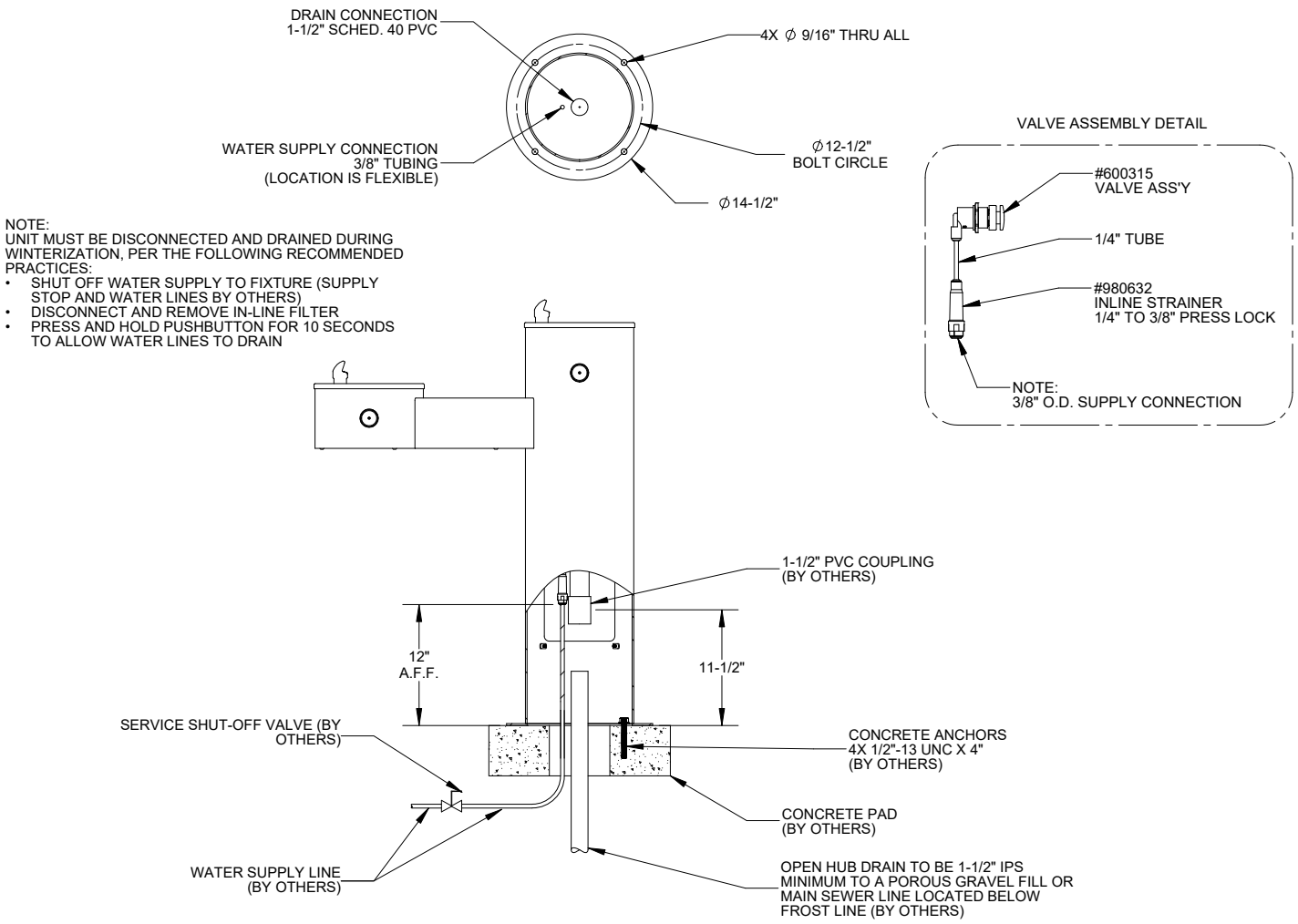


## Physical Dimensions- Dual Station

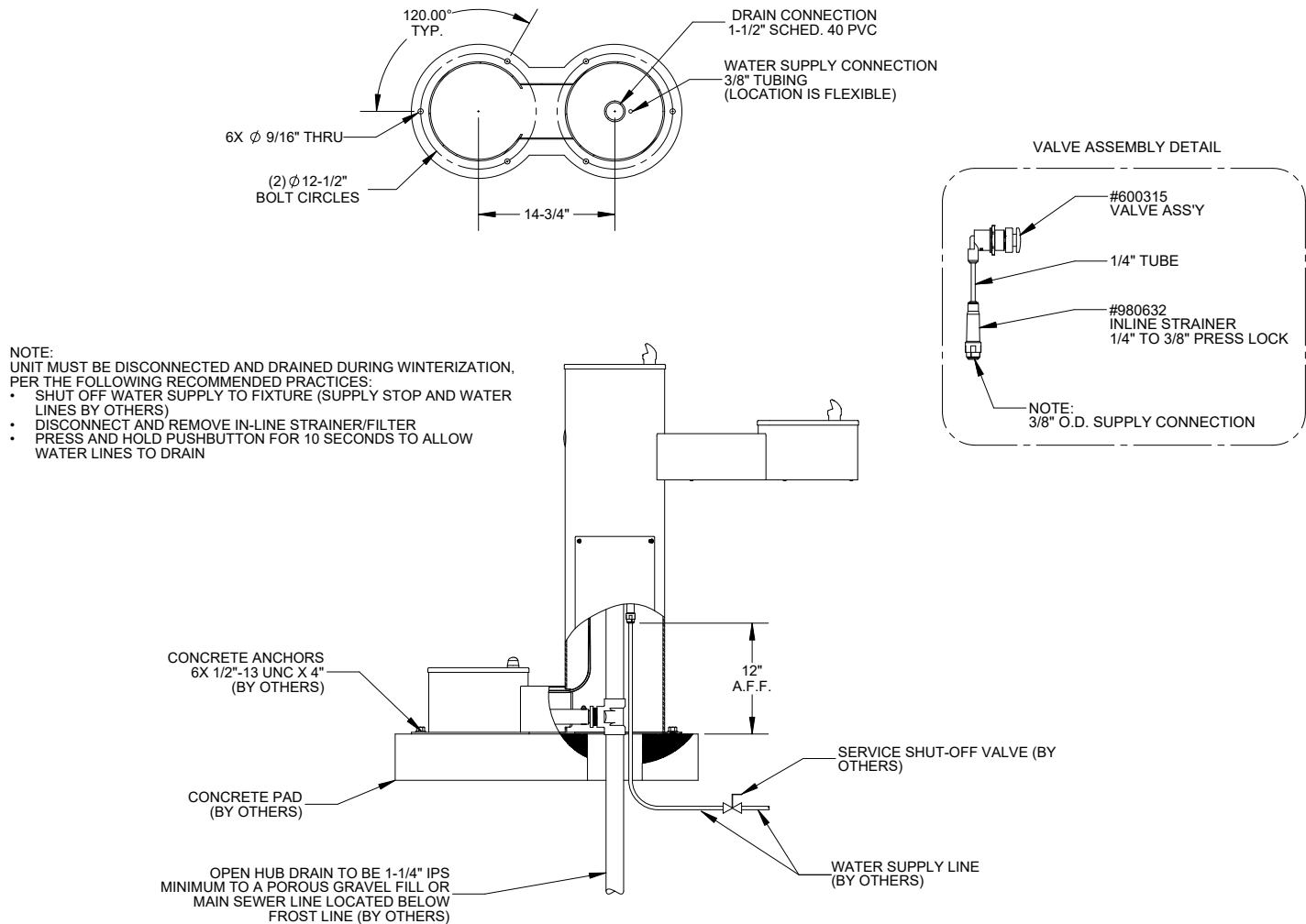
Physical Dimensions- Three Station



Rough-in Dimensions- Dual Station



Rough-in Dimensions- Three Station

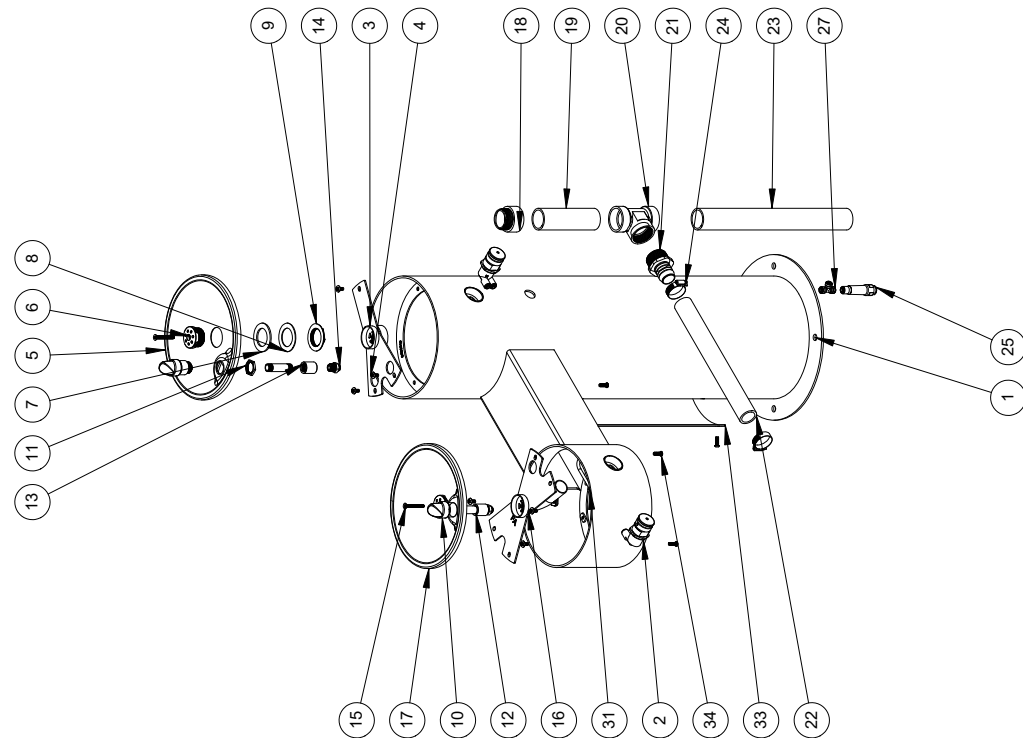


Required Installation Supplies

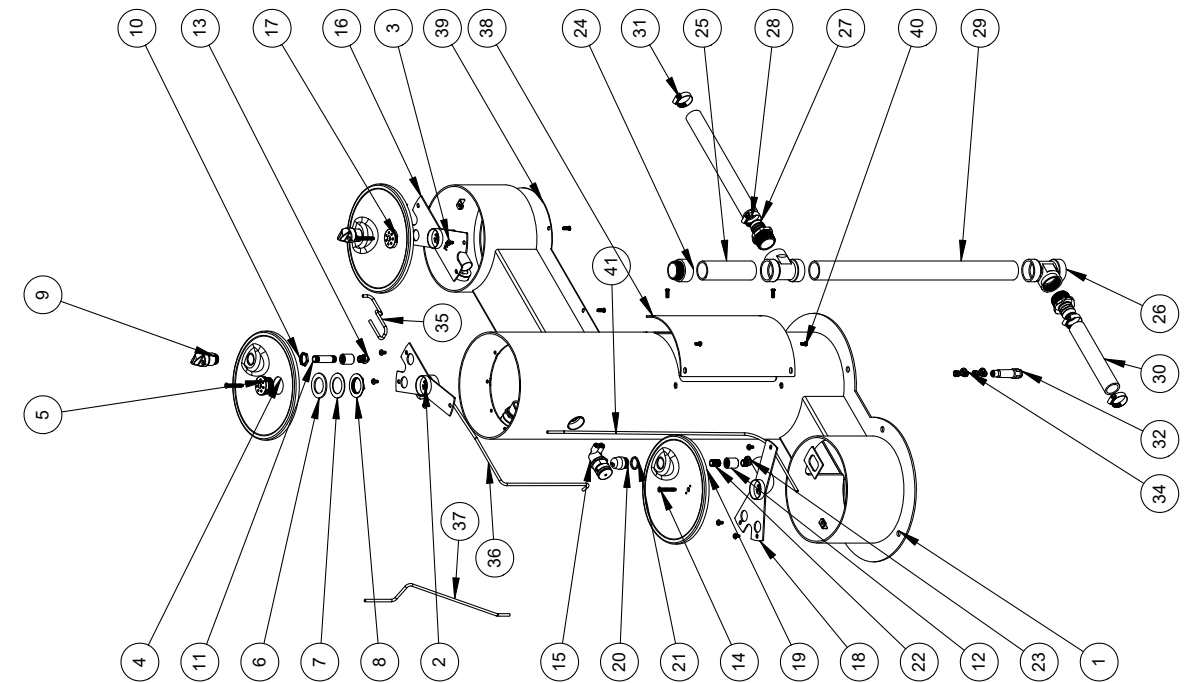
- Proper mounting hardware
- Proper plastic fittings as indicated
- Hardware for waste outlet connections
- Gasket for waste outlet connection
- Shims (for installation if necessary)
- Supply piping
- Silicone caulk
- Plumbers putty

## Parts List and Exploded-view Drawing-Dual Station

ITEM #	PART #	DESCRIPTION	QTY.
1	S200036	WELDED BODY ASSY - WOOD-2-HC	1
2	600315	VALVE ASSEMBLY, ADJUSTABLE PUSHBUTTON	2
3	S200031	RECEPTOR SUPPORT ASSEMBLY	1
4	800144	SCREW, PHILLIP (TH), S/S, 1/4-20 X 1/2" TRUSS HEAD	6
5	S200032	STANDARD BOWL, STRAIGHT DOUBLE-D - 1-3/4" DEPTH	1
6	380301	DRAIN, ODF, 2" O.D., STAINLESS STEEL	2
7	380274	GASKET, 1-1/2" DRAIN	2
8	380273	DRAIN WASHER, 1-5/8"	2
9	600043	NUT, 1 5/8"-12 THD FOR 1-1/2" DRAIN	2
10	600585	BUBBLER, DRINKING FOUNT, DECK MOUNTED, COMMERCIAL	2
11	600612N	HEX NUT, 3/4"-14 NPSM	2
12	320469	NIPPLE, 3/8" NPT X 2.5" LONG	2
13	320091	COUPLING, 3/8" FPT STAINLESS STEEL	2
14	320437	ADAPTER, 3/8" NPTF MALE X 1/4" TUBE PUSH-TO-CONNECT	2
15	4509SSN	1/4"-20 x 2" FH SECURITY SCREW	2
16	S200517	RECEPTOR SUPPORT ASSEMBLY w/DRAIN ELBOW	1
17	S200033	ADA BOWL, 40-DEG, 1-3/4" DEPTH	1
18	320284	PVC THREADED ADAPTER, 1-1/2"	1
19	320280-6	PVC PIPE, 1-1/2" SCHED, 40 X 6" LONG	1
20	320282	CLEANOUT TEE, 1-1/2" PVC	1
21	320286	BARB ADAPTER, 1-1/2" MIP X 1-1/4" PVC	1
22	320288-14	PVLBAR, 1-1/2" REINFORCED VINYL TUBING, 1-1/4" X 14" LONG	1
23	320280-16	PVC PIPE, 1-1/2" SCHED, 40 X 16" LONG	1
24	980617	WORM GEAR PIPE CLAMP, 2"	2
25	980632	STRAINER, IN-LINE, 1/4 TO 3/8 PRESS LOCK	1
26	600471-2	TUBING, 1/4" OD X 0.17" ID X 2" LONG	1
27	320438	TEE, 1/4" PUSH-TO-CONNECT	1
28	600471-21		1
29	600471-12	TUBING, 1/4" O.D. X 0.17" I.D. X 12" LONG	1
30	600471-32	TUBING, 1/4" O.D. X 0.17" I.D. X 32" LONG	1
31	600471-18	TUBING, 1/4" OD X 0.17" ID X 18" LONG	1
32	S200075	OUTER BOTTOM COVER - ADA / CHILD	1
33	S200076	ACCESS COVER - 14" X 8-1/2"	1
34	4502SSN	SCREW, 1/4-20 x 3/4 SECURITY SCREW (RH)	9



## Exploded-view Drawing- Three Station



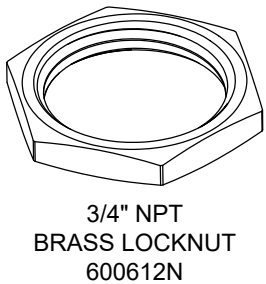
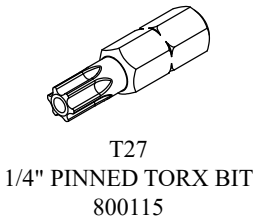
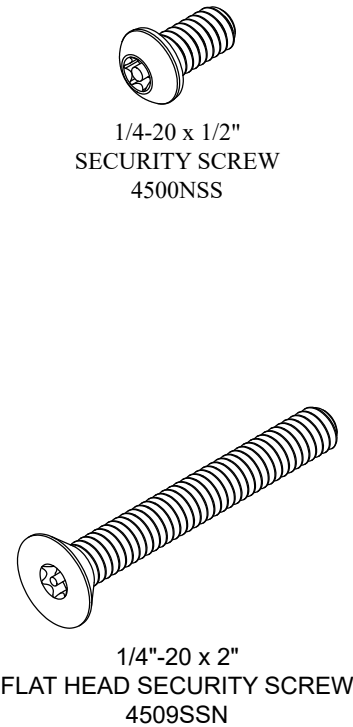
NOTE: PART #600471 - 1/4"  
AND PART #600471 - 32" TUBING  
NOT SHOWN IN EXPLODED VIEW.

Parts List- Three Station

ITEM #	PART #	DESCRIPTION	QTY.
1	S200753	WELDED BODY ASSY - WODF-3FA-HC-PET	1
2	S200031	RECEPTOR SUPPORT ASSEMBLY	1
3	800144	SCREW, PHILLIP (TH), S/S, 1/4-20 X 1/2" TRUSS HEAD	9
4	S200032	STANDARD BOWL, STRAIGHT DOUBLE-D - 1-3/4" DEPTH	1
5	380301	DRAIN, ODF, 2" O.D., STAINLESS STEEL	2
6	380274	GASKET, 1-1/2" DRAIN	2
7	380273	DRAIN WASHER, 1-5/8"	2
8	600043	NUT, 1 5/8"-12 THD FOR 1-1/2" DRAIN	2
9	600585	BUBBLER, DRINKING FOUNT, DECK MOUNTED, COMMERCIAL	2
10	600612N	HEXNUT, 3/4"-14 NPSM	3
11	320469	NIPPLE, 3/8" NPT X 2.5" LONG	2
12	320091	COUPLING, 3/8" FPT STAINLESS STEEL	3
13	320437	ADAPTER, 3/8" NPTF MALE X 1/4" TUBE PUSH-TO-CONNECT	2
14	4509SSN	1/4"-20 x 2" FH SECURITY SCREW	3
15	600315	VALVE ASSEMBLY, ADJUSTABLE PUSHBUTTON	3
16	S200517L	LEFT HAND FRONT APPROACH SUPPORT ASSEMBLY w/DRAIN ELBOW	1
17	S200033	ADA BOWL, 40-DEG, 1-3/4" DEPTH	1
18	S200034	RECEPTOR SUPPORT ASSEMBLY w/DRAIN ELBOW	1
19	S200237	PET BOWL - 1-3/4" DEPTH	1
20	380056	(PBB) 30 DEG. PET BOWL BUBBLER	1
21	S200290	SPACER, BUBBLER MOUNTING	1
22	320478	NIPPLE 3/8" x 1.0" T304 SS	1
23	320575	ELBOW, 3/8" NPTF MALE X 1/4" TUBE PUSH-TO-CONNECT	1

ITEM #	PART #	DESCRIPTION	QTY.
24	320284	PVC THREADED ADAPTER, 1-1/2"	1
25	320280-6	PVC PIPE, 1-1/2" SCHED. 40 X 6" LONG	1
26	320282	CLEANOUT TEE, 1-1/2" PVC	2
27	320286	BARB ADAPTER, 1-1/2" MIP X 1-1/4" PVC	2
28	320288-14	NYLABRAID REINFORCED VINYL TUBING, 1-1/4" X 14" LONG	1
29	320280-24 4375	PVC PIPE, 1-1/2" SCHED. 40 X 24-7/16" LONG	1
30	320288	NYLABRAID REINFORCED VINYL TUBING, 1-1/4" X 8.75" LONG	1
31	980617	WORM GEAR PIPE CLAMP, 2"	4
32	980632	STRAINER, IN-LINE, 1/4 TO 3/8 PRESS LOCK	1
33	600471-2	TUBING, 1/4" OD X 0.17" ID X 2" LONG	2
34	320438	TEE, 1/4" PUSH-TO-CONNECT	2
35	600471-12	TUBING, 1/4" OD X 0.17" ID X 12" LONG	1
36	600471-32.5	TUBING, 1/4" OD X 0.17" ID X 32-1/2" LONG	1
37	600471-18.5	TUBING, 1/4" OD X 0.17" ID X 18-1/2" LONG	1
38	S200076	ACCESS COVER - 14" X 8-1/2"	1
39	S200075	OUTER BOTTOM COVER - ADA / CHILD	1
40	4502SSN	SCREW, 1/4-20 x 3/4 SECURITY SCREW (BH)	9
41	600471-35	TUBING 1/4"OD x .170"ID X 35" LONG	1
42	600471-32	TUBING, 1/4" OD X 0.17" ID X 32" LONG	1

Hardware Identification



# Installation Instructions

## Step 1: Fixture Installation

**Note: the outdoor drinking fountain is to be mounted on a flat, level surface (concrete or otherwise) with an adequate support structure.**

**Note: refer to Rough-In Dimensions for locating plumbing connections.**

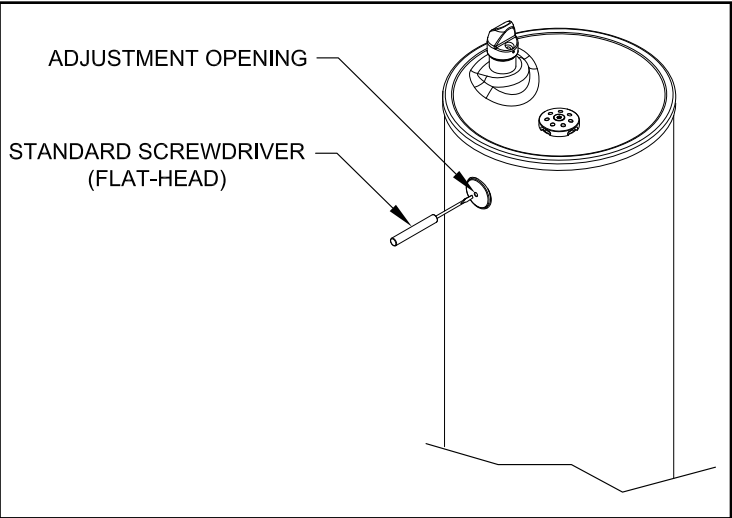
- 1.) Install service shut-off valve in water supply line (valve not furnished).
- 2.) Locate and install drinking fountain using 1/2"-13 x 4" stainless steel concrete anchors.
- 3.) As noted previously, flush the water supply line with clean drinking water before making final connections to the drinking fountain.
- 4.) Connect water supply line to inline strainer inside drinking fountain using 3/8" plastic tubing (extra tubing not furnished). Push tube straight into fitting on filter about 3/4" until it reaches a positive stop. Water supply connection must comply with local codes.
- 5.) Connect fountain drain line to drainage system. Drain is to be 1-1/2" IPS minimum to a porous gravel fill or main sewer line located below frost line. Installer to provide waste trap downstream of drain connection. Drain and waste trap must comply with local codes.
- 6.) Turn on water supply and check both the water supply lines and drain lines for leaks.

# Installation Instructions (cont.)

## Step 2: Adjusting Drinking Fountain Flow

- 1.) Insert a standard flat-head screwdriver into adjustment opening on face of push button, as shown.
- 2.) Rotate screwdriver to adjust until desired flow is achieved:

Rotate clockwise to increase flow.  
Rotate counterclockwise to decrease flow.



(Drinking Fountain shown)



# Care and Maintenance

## Unit Care

Outdoor Drinking Fountains are not freeze resistant. The unit should be disconnected or shut off from the water supply and drained during the colder months. For more information, refer to the rough-in detail.

In order to ensure adequate flow and cleanliness of water, the inline strainer in the supply line should be cleaned or replaced regularly. New inline strainers can be ordered using Part No. 980632.

## Stainless Steel Care

Stainless Steels are basically alloys of iron and chromium and are corrosion resistant. Stainless steel has a bright surface that is easy to clean and is free from oxides. Therefore, cleaning of stainless steel is relatively simple and easy if done on a regular basis.

Frequency of cleaning should depend on the rate at which the fixture becomes dirty. Remember that fresh (soft) deposits of all kinds are relatively easy to remove, while removing older (hard) deposits are much more difficult. Establish a cleaning SCHEDULE.

Routine cleaning should involve ordinary soap or detergent and water, applied with a sponge, brush or cloth. Baking soda, borax or any of several non-abrasive commercial cleansing agents can help hasten the cleaning action. After scrubbing, rinse THOROUGHLY and wipe dry.

DO NOT use common steel wool, scouring pads, scrapers, wire brushes, files or other steel tools to clean stainless steel. Such items will scratch the surface or leave small particles of iron imbedded in the surface, which will eventually rust and stain the surface - even appearing as if the stainless itself was rusting.

Certain chemical compounds, if used on stainless steel, can give the appearance of rust and if allowed to stand for long periods of time, can pit the surface of even stainless. Products containing hydrochloric acid, muriatic acid or potassium hydrochloride can ruin the surface.

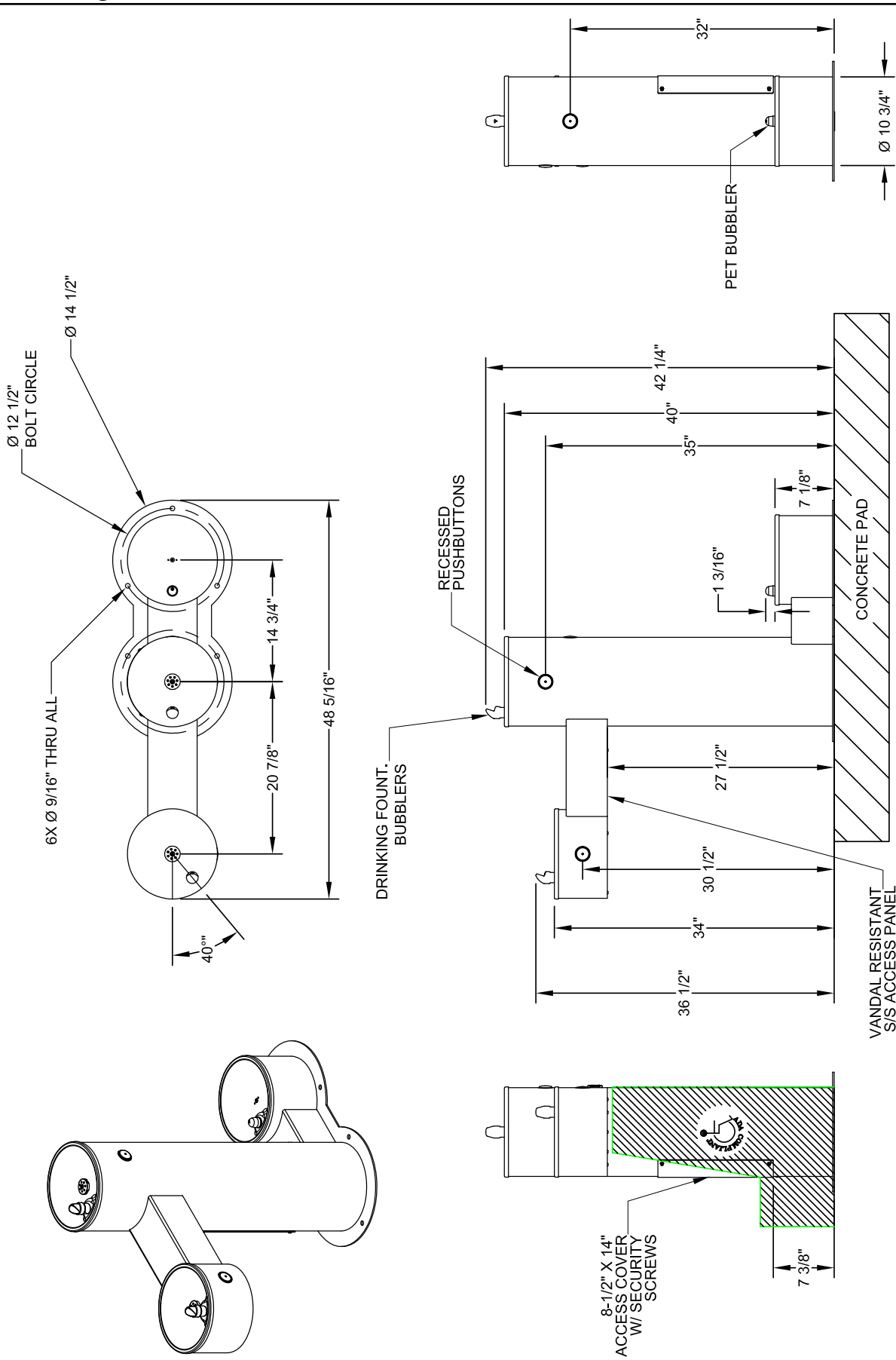
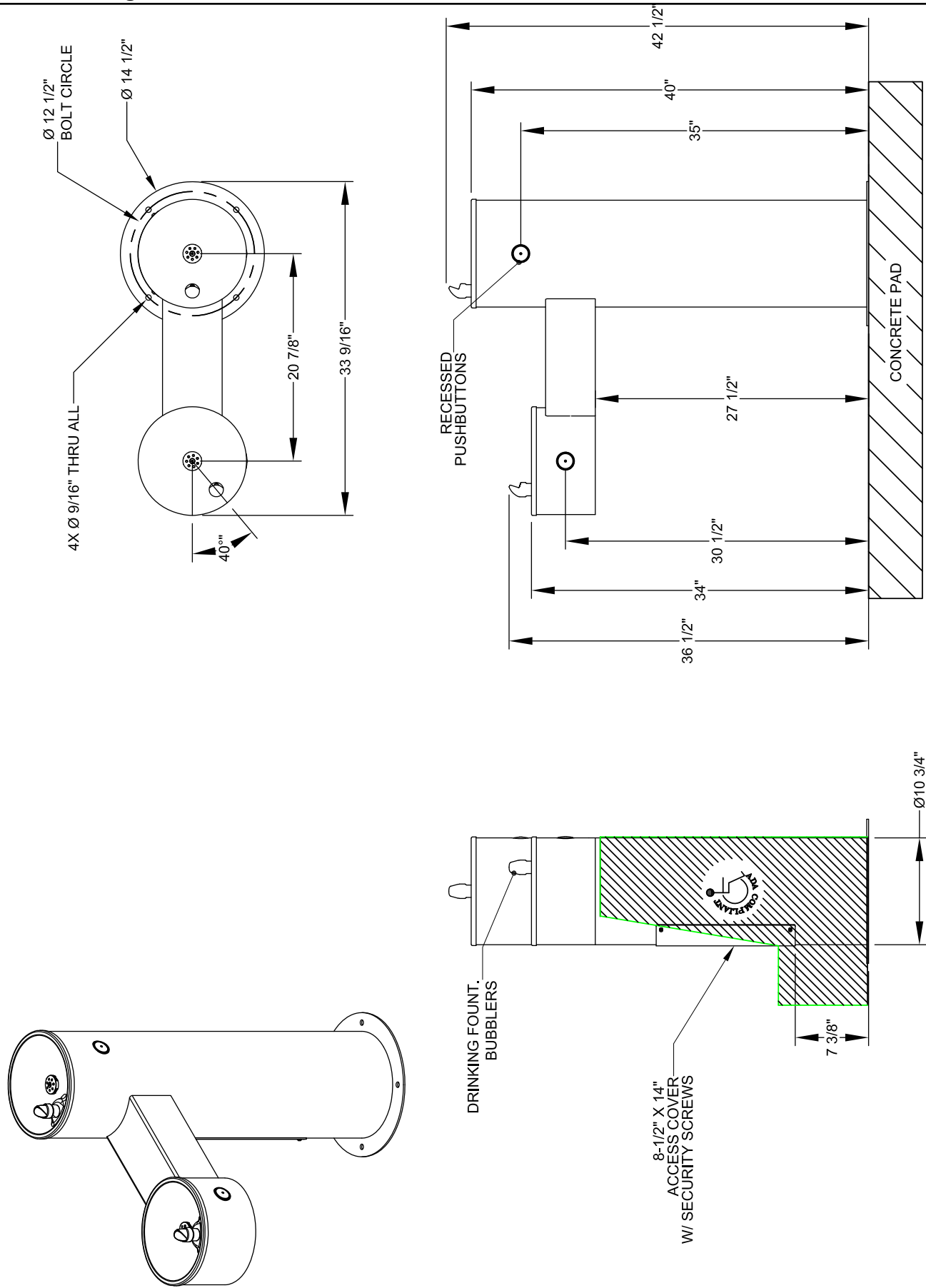
# Troubleshooting

## INSUFFICIENT FLOW

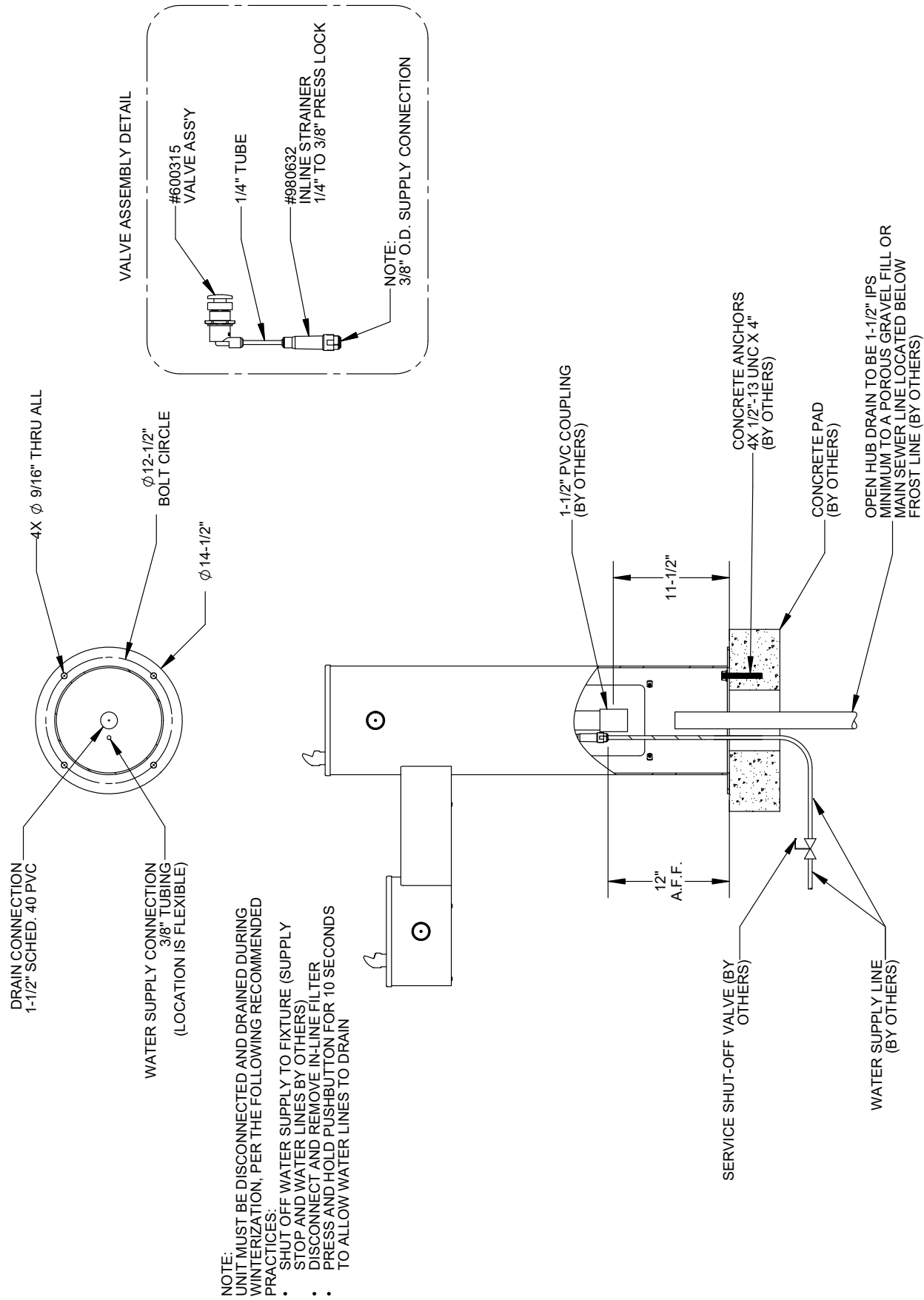
- A. Ensure the service shut-off valve is fully open (provided by installer).
- B. Ensure water supply is within the normal operating range of 40-60 psi.
  - 1. If pressure is too low, flow can be drastically reduced.
  - 2. If pressure is too high, the strainer and/or valve may have been damaged.
  - 3. The unit is rated for a maximum range of 30-105 psi.
- C. Inspect the unit's valve for damage, and replace if necessary.
- D. Inspect the inline strainer for damage and/or clogging, and clean or replace as necessary.
- E. Check all fittings and tubing for damage and leaks. Replace components as necessary.

## UNIT HAS PROBLEMS DRAINING

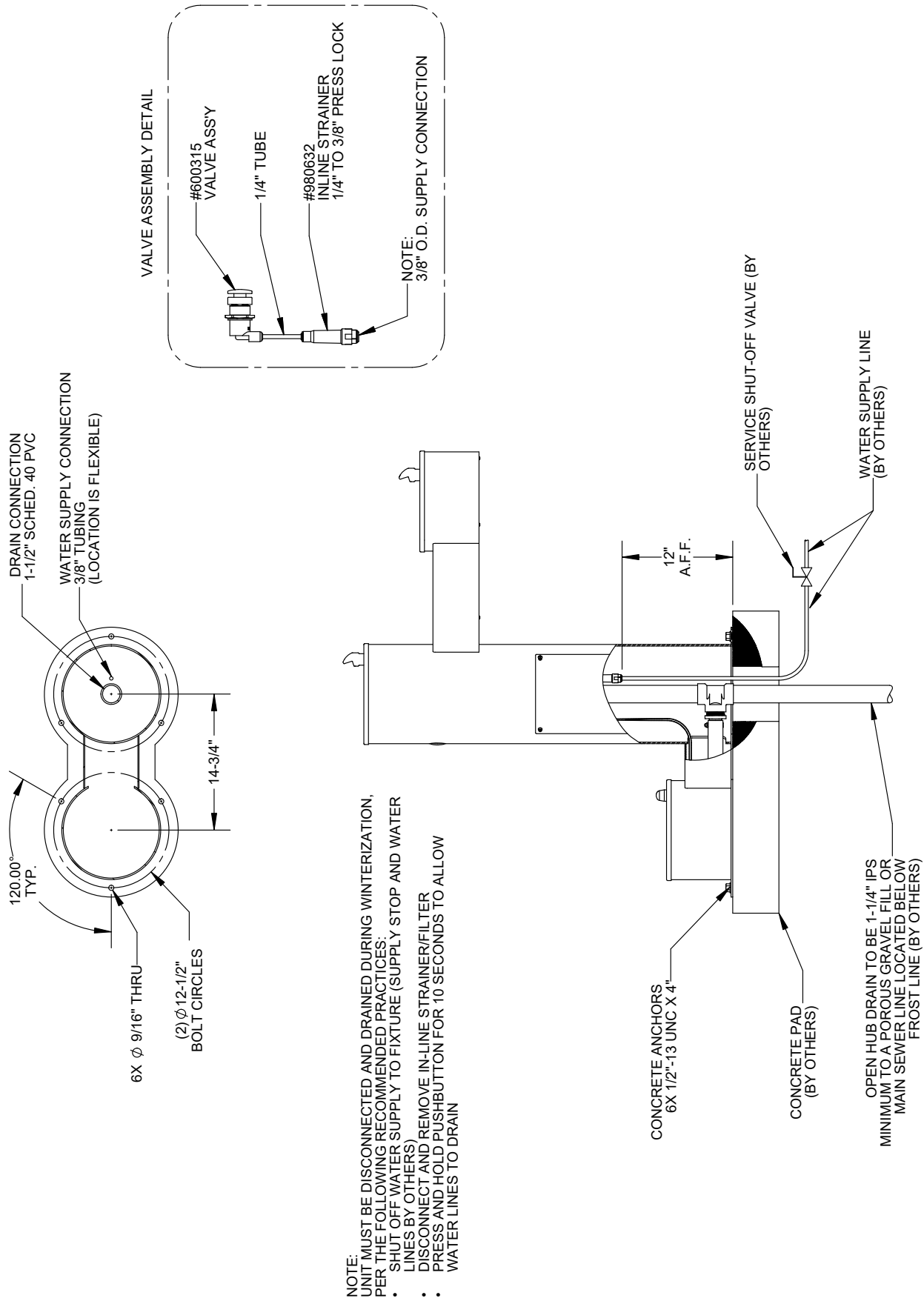
- A. Remove any debris from the drain.
- B. Remove any debris from the PVC pipe and fittings.
- C. Check and clear the waste trap (provided by installer).



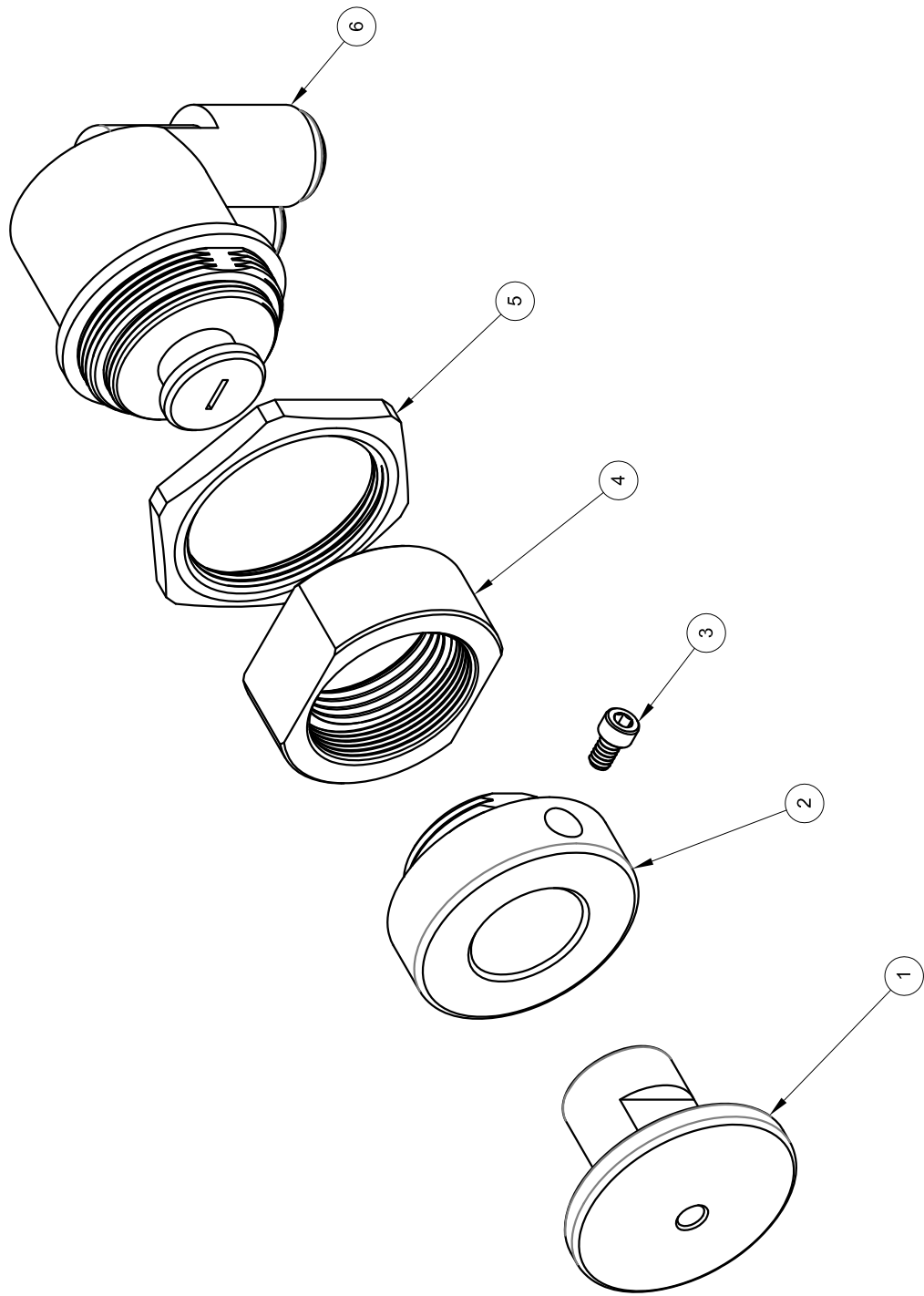
DRAWING: Dual Station Rough-in Dimensions



DRAWING: Three Station Rough-in Dimensions



DRAWING: Push Button Detail



ITEM #	PART #	DESCRIPTION	QTY.
1	380110	PUSH PIN, ADJUSTABLE PUSHBUTTON VALVE	1
2	380111	SLEEVE, ADJUSTABLE PUSHBUTTON VALVE	1
3	800157	6-32 x 1/4" SH CAP SCREW	1
4	380062	SLEEVE, ADAPTER TO ELKAY PLASTIC SELF-CLOSING VALVE	1
5	600286	NUT, CARTRIDGE MOUNTING	1
6	600285	SELF-CLOSING CARTRIDGE, 1.0 GPM	1