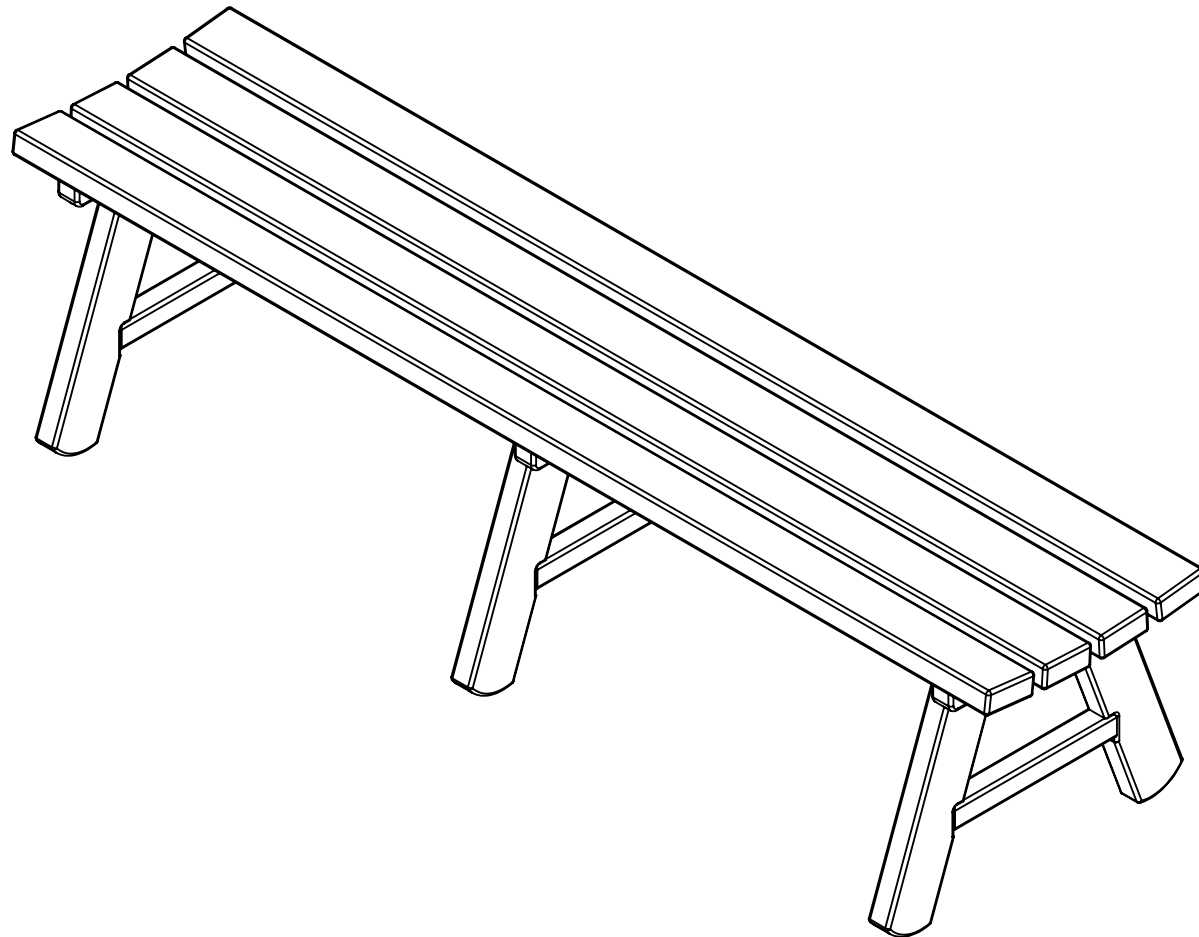


# **BENCH INSTRUCTIONS**

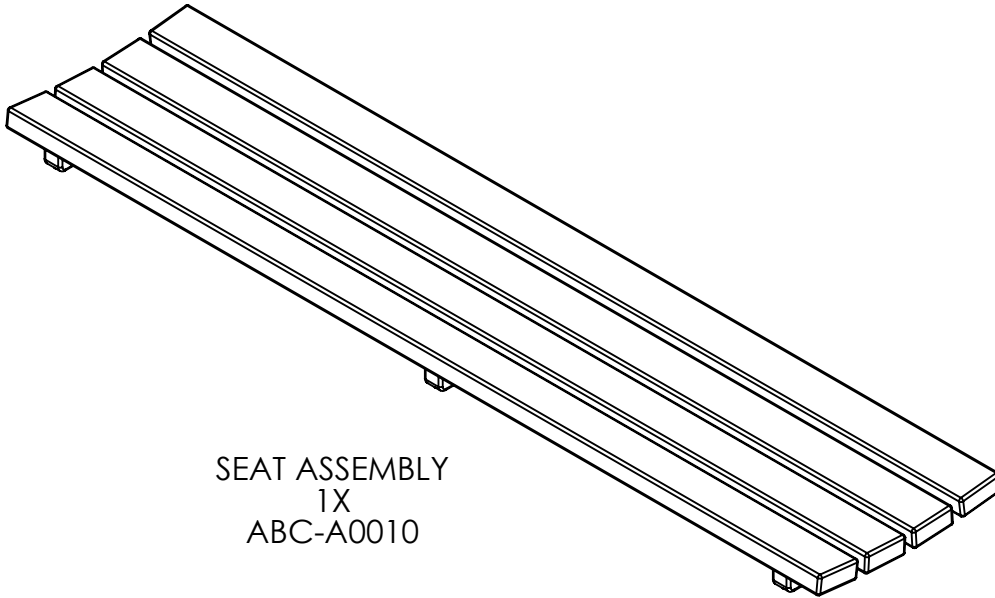
## **BC1005**

REV# 1

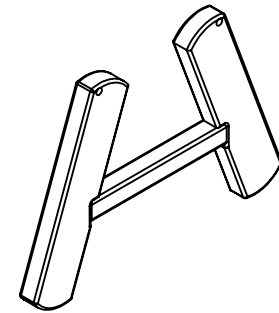


# BENCH INSTRUCTIONS

## BC1005



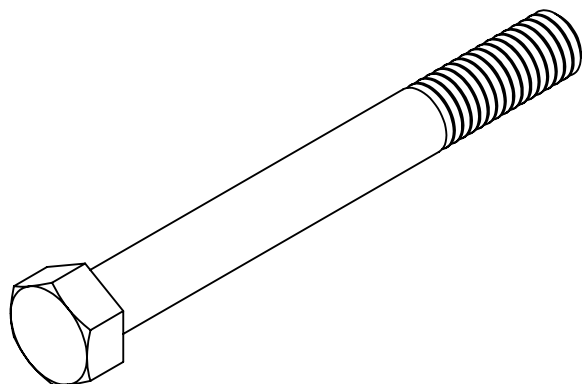
SEAT ASSEMBLY  
1X  
ABC-A0010



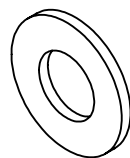
LEG ASSEMBLY  
3X  
ABC-A0009

## BENCH INSTRUCTIONS

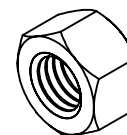
### BC1005



3/8-16 X 3.5"  
HEX HEAD BOLT  
6X  
F0001



3/8 FLAT WASHER  
12X  
F0002

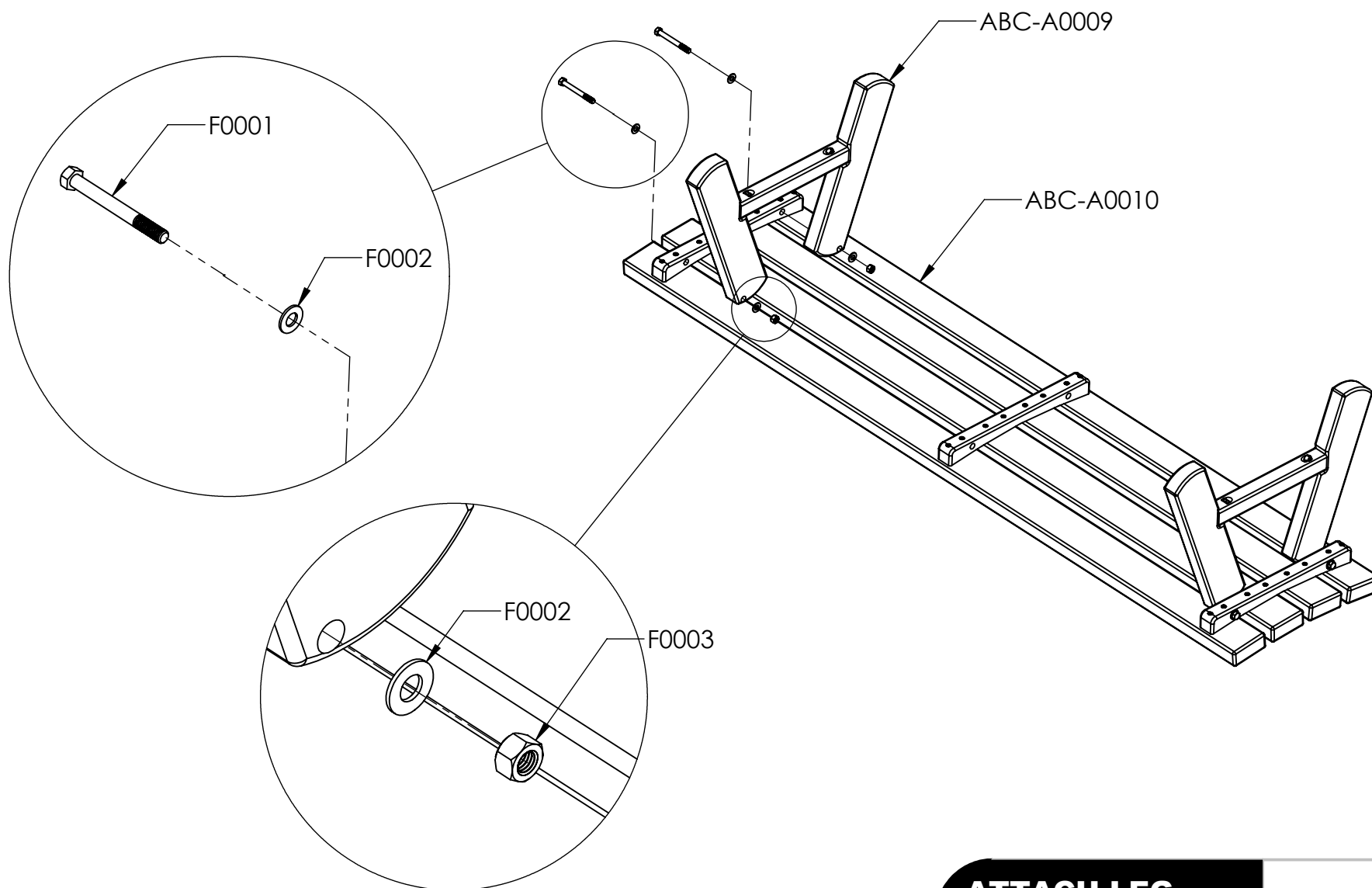


3/8-16 NYLOCK NUT  
6X  
F0003

**REQUIRED TOOLS:**  
**-(2) 9/16" WRENCHES**

# BENCH INSTRUCTIONS

## BC1005

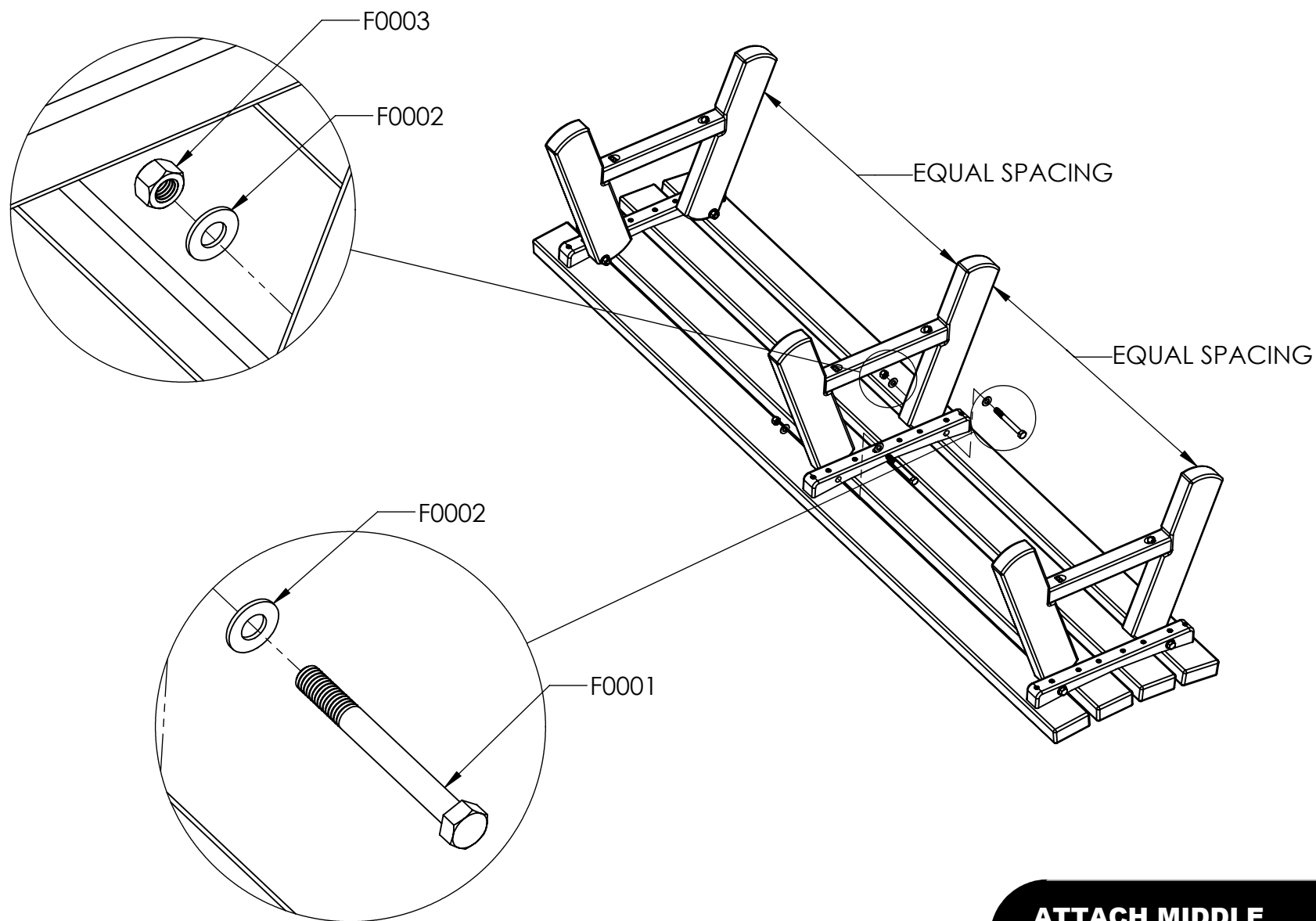


**ATTACH LEG  
ASSEMBLY TO  
SEAT ASSEMBLY**

**3/4**

# BENCH INSTRUCTIONS

## BC1005

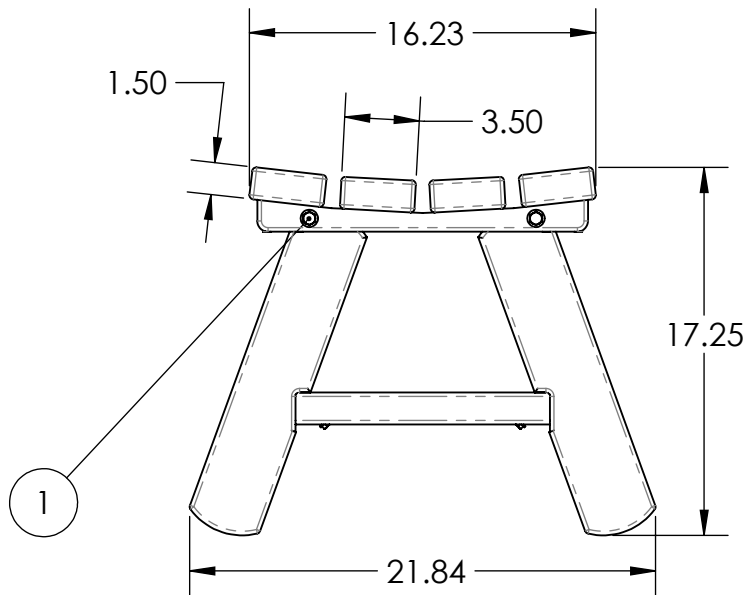


**ATTACH MIDDLE  
LEG ASSEMBLY TO  
SEAT ASSEMBLY**

# BENCH SPECIFICATIONS BC1005

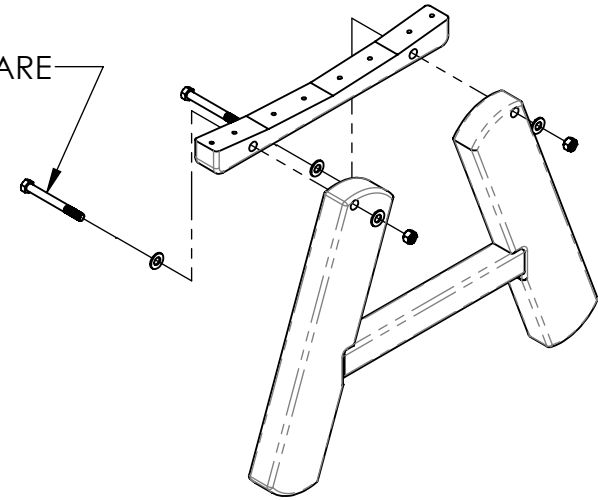
NOTE: ALL MATERIAL IS RECYCLED PLASTIC LUMBER UNLESS NOTED

ALL DIMENSIONS SHOWN IN INCHES

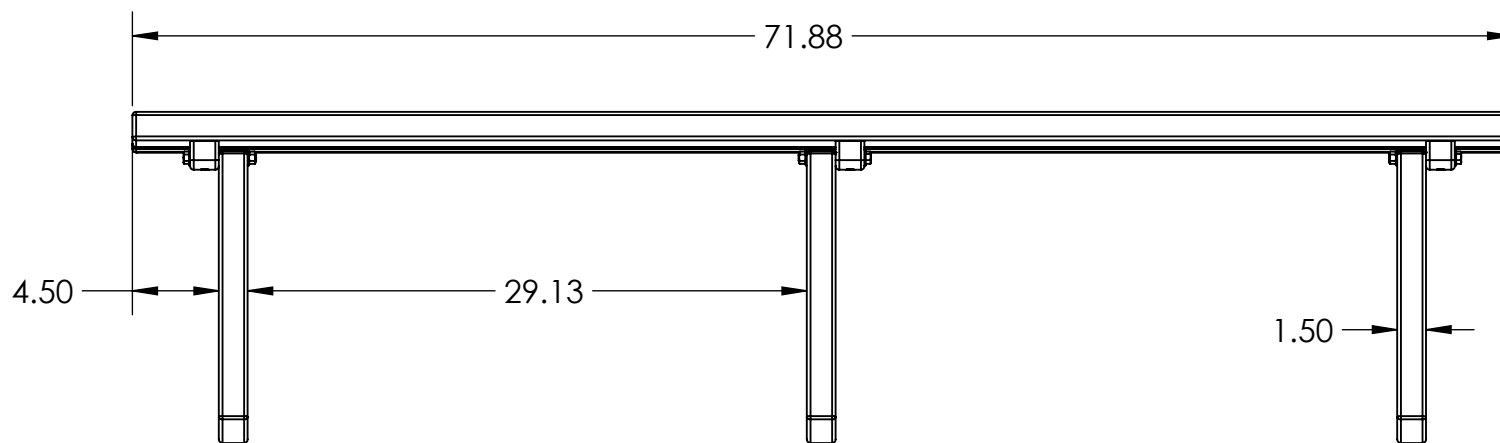


**SIDE**

STAINLESS STEEL HARDWARE



**1** HARDWARE DETAILS



**FRONT**