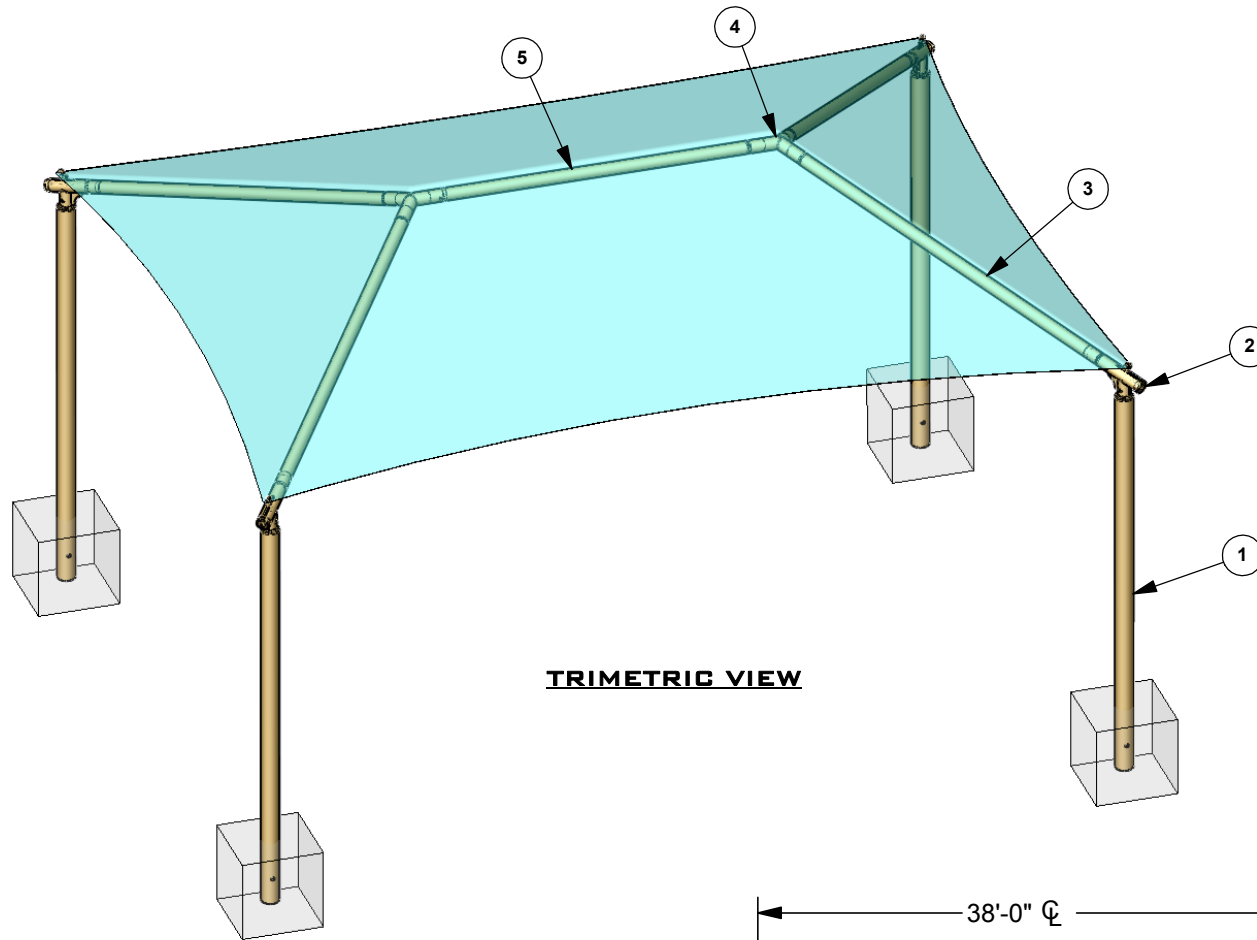
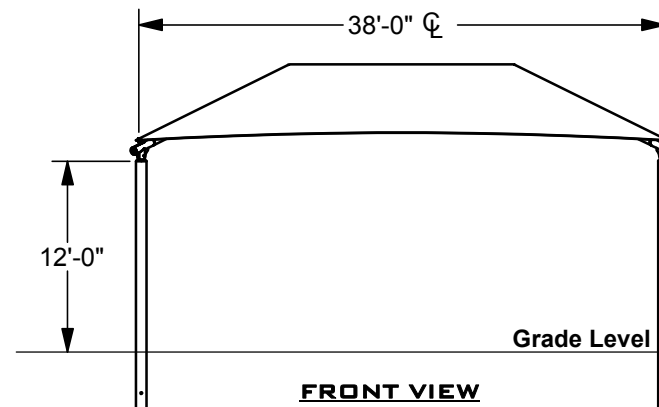


Ref. #	Part Description	Qty.
1	Column - Embedded	4
2	Elbow - Glide	4
3	Rafter - Swaged One End	4
4	Y-Joiner	2
5	Ridge Pole - Swaged Both Ends	1
6	Fabric Canopy - with Cable Insert	1
7	Frame Hardware Kit	1

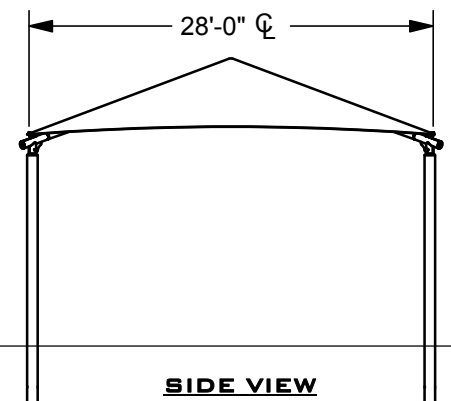
**RECTANGLE 4-COLUMN HIP
SHADE WITH GLIDE ELBOWS**



TRIMETRIC VIEW



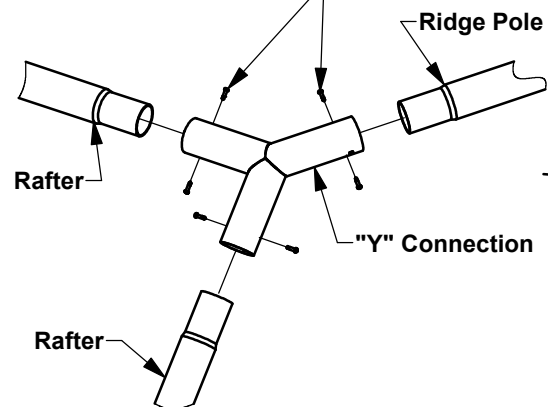
FRONT VIEW



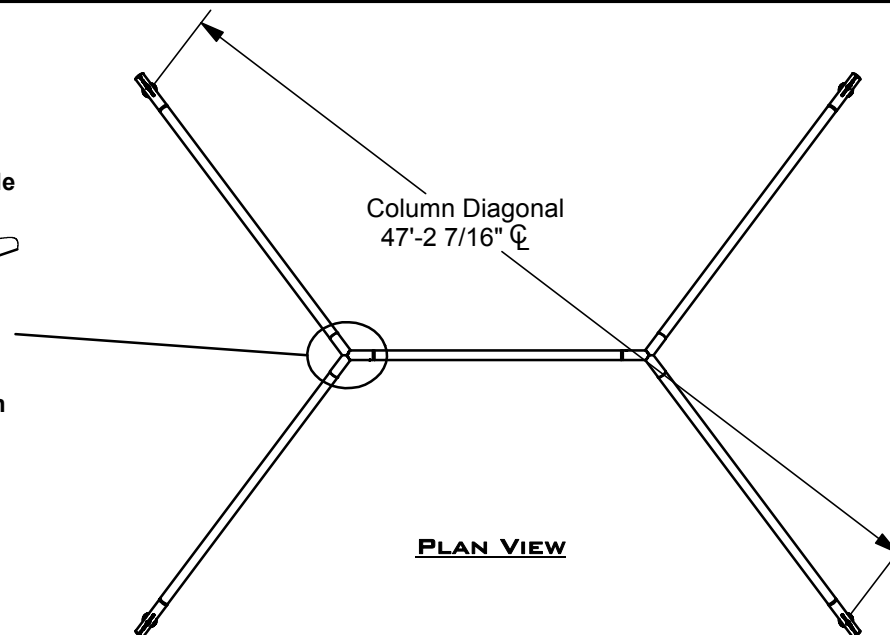
SIDE VIEW

**RECTANGLE
4-COLUMN FRAME DETAIL**

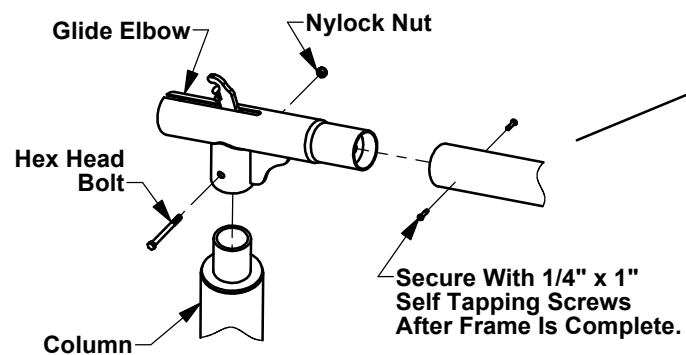
Secure With 1/4" x 1"
Self Tapping Screws
After Frame Is Complete.



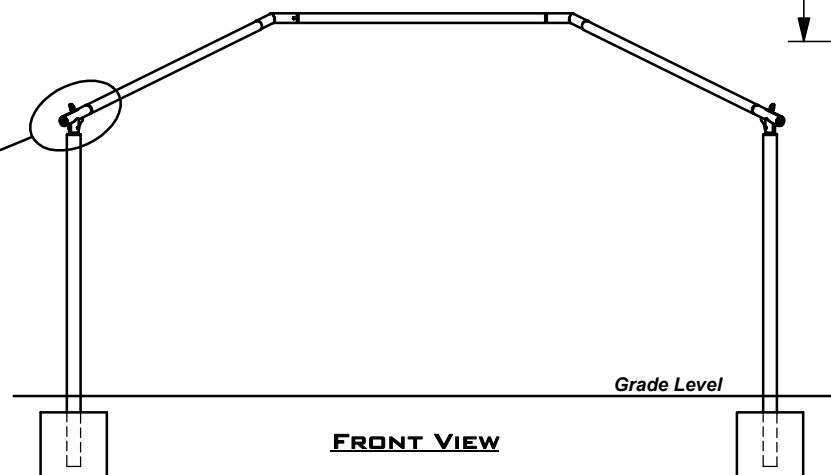
**"Y" CONNECTION
ASSEMBLY**



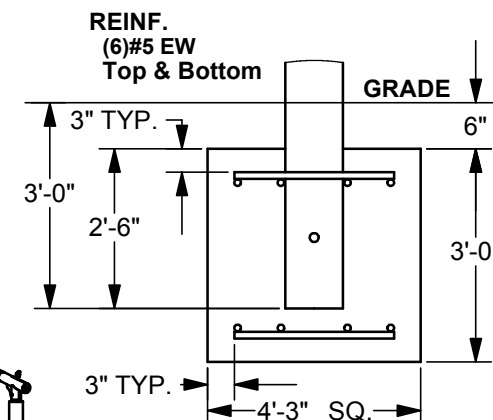
PLAN VIEW



**ELBOW CONNECTION
ASSEMBLY**



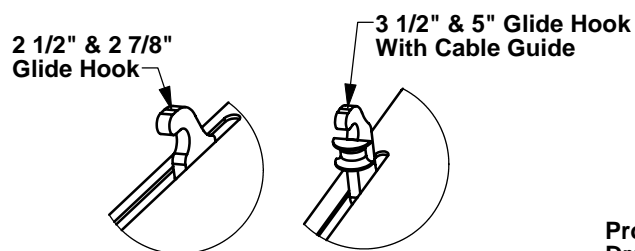
FRONT VIEW



FOOTING DETAIL

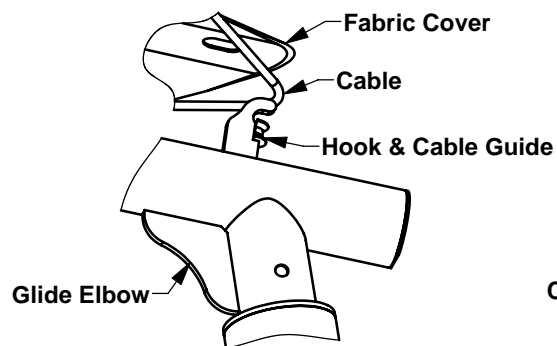
NOTE:
Holes Are Provided At The
Base Of Each Column
Additional #5 Rods

Glide Elbow Details



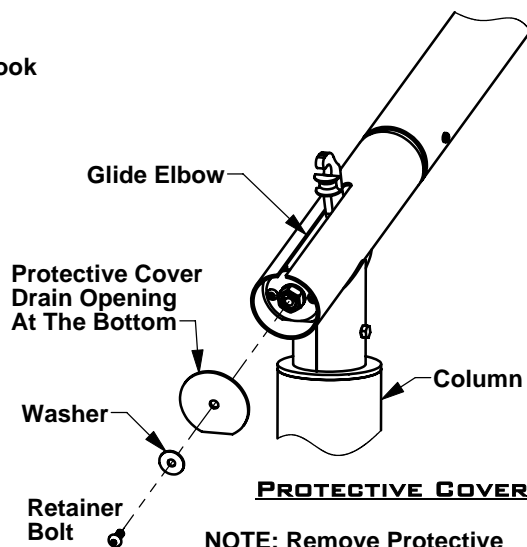
HOOK STYLES

NOTE: Larger Framework Will Have Glide Hooks With A Seperate Position For The Cable. For Standard Glide Elbows Both The Cable And Fabric Are Positioned Over Hook.



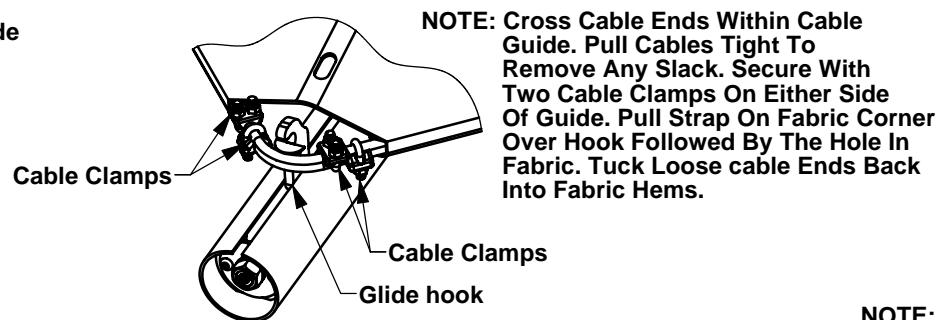
FABRIC INSTALLATION

NOTE: Pull Cable Over Hook Into Cable Guide. Pull Hole In Fabric Corner Over Hook. This Applies To Three Of Four fabric Corners.



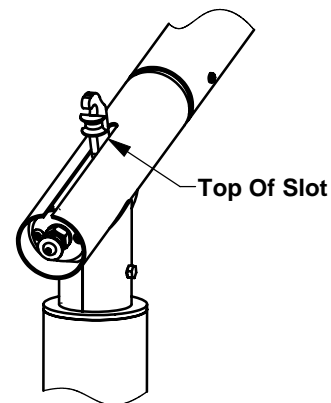
PROTECTIVE COVER

NOTE: Remove Protective Cover From End Of Glide Elbows.



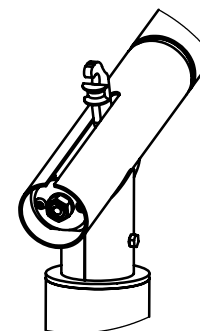
SECURE CABLE ENDS

NOTE: Cross Cable Ends Within Cable Guide. Pull Cables Tight To Remove Any Slack. Secure With Two Cable Clamps On Either Side Of Guide. Pull Strap On Fabric Corner Over Hook Followed By The Hole In Fabric. Tuck Loose cable Ends Back Into Fabric Hems.



GLIDE ADJUSTMENT

NOTE: Rotate Hex Nut With Hand Tool To Adjust All Glide Hooks To The Top Of Slots Before Installing Fabric.



FABRIC TENSION

NOTE: Rotate Glide Hex Nuts Equally With Hand Tool To Adjust Cable And Fabric Tension.